

# \$399,900 - 3446 Hilltown Close Crescent, Kelowna

MLS® #10287734

**\$399,900**

0 Bedroom, 0.00 Bathroom,  
Vacant Land on 0.08 Acres

McKinley Landing, Kelowna, British Columbia

Located in Desirable McKinley Landing, A waterfront Community that offers lifestyle that's hard to beat. You'll have access to a Marina, Beach, and a Newly Opened Restaurant, construction is underway on a New Amenities building that will include a Pool, Gym, Hot Tub and more. Outdoor recreation out your front door, Walking and biking Trails, a Children's Play Park, Pickle Ball Court, Dog Park, and Community Garden. Close to the Airport, UBCO and approx a 20 Minute Drive to all you need in Lake Country or Kelowna. This lot is ideally suited for a 3bed/2bath Rancher w/basement and Double Car Garage. (id:6289)



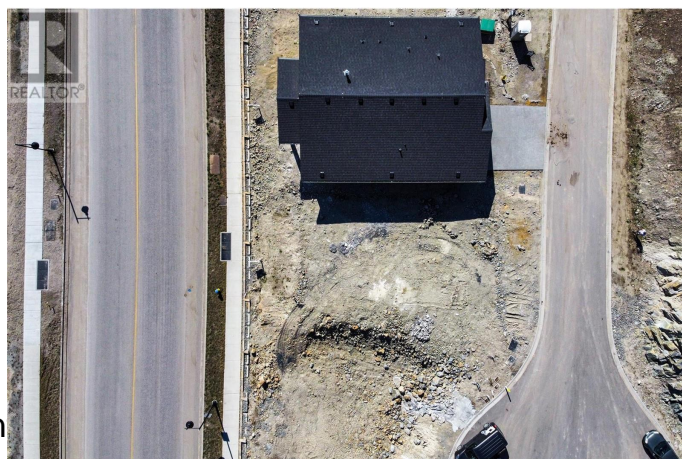
## Essential Information

Listing #	10287734
Price	\$399,900
Bathrooms	0.00
Acres	0.08
Type	Vacant Land
Sub-Type	Freehold

## Community Information

Address	3446 Hilltown Close Crescent
Subdivision	McKinley Landing
City	Kelowna
Province	British Columbia
Postal Code	V1V0C6

## Amenities



Amenities	Airport, Park
Utilities	Cable, Electricity, Natural Gas, Telephone, Water
Features	Cul-de-sac
Is Waterfront	Yes
Waterfront	Waterfront nearby

### Additional Information

Zoning	Unknown
--------	---------

### Listing Details

Listing Office	Oakwyn Realty Okanagan
----------------	------------------------



The trademarks MLS®, Multiple Listing Service® and the associated logos are owned by The Canadian Real Estate Association (CREA) and identify the quality of services provided by real estate professionals who are members of CREA. REALTOR®. Member of CREA and more.

Listing information last updated on October 13th, 2025 at 6:01am CDT