

# \$1,749,900 - 1402 / 1404 Inkar Road Lot# 1 & 2, Kelowna

MLS® #10321946

**\$1,749,900**

0 Bedroom, 0.00 Bathroom,  
Vacant Land on 0.41 Acres

Springfield/Spall, Kelowna, British Columbia

Huge value in the land, with this Development Opportunity. This location in the Capri-Landmark neighbourhood is near Gordon Drive, and Springfield Road. This area is an employment hub and an opportunity for development. The blueprint for the Capri-Landmark Urban Centre Plan includes:

1. Strategic Redevelopment guidelines including the placement of parks, public spaces & a vibrant urban centre. 2.

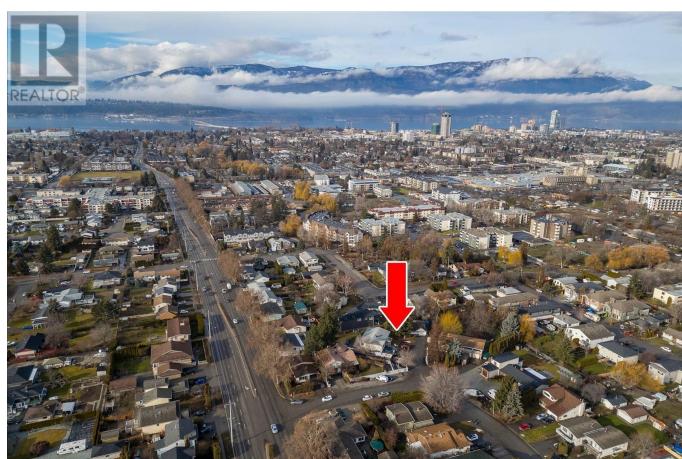
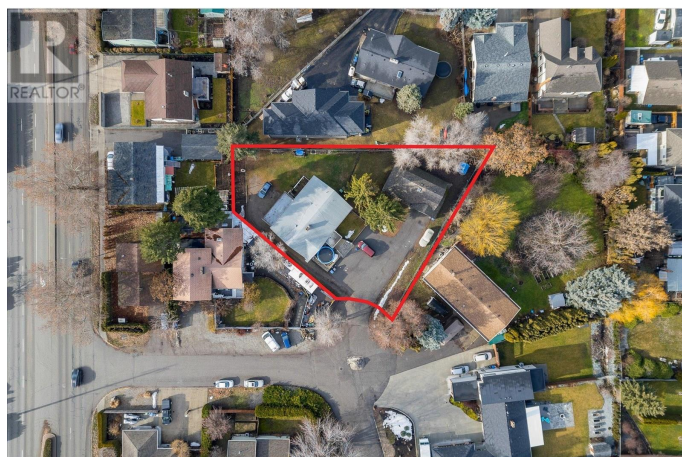
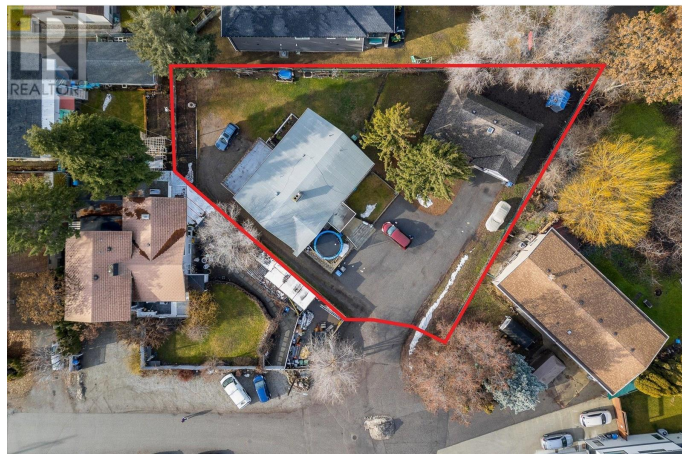
High-Density Living: Capri-Landmark is poised to evolve from predominantly single-family residences to a high-density housing hub. Imagine modern apartments, bustling commercial spaces & improved transportation networks converging in one dynamic locale.

This lot may be able to accommodate 10 units X 3 bedrooms with rooftop patios, according to IH Design (see attached, buyer to do own due diligence). Immense potential here! Ask for our construction quote available from Vision 1 Steel Corporation for pre-fab build costs.

(id:6289)

## Essential Information

Listings #	10321946
Price	\$1,749,900
Bathrooms	0.00
Acres	0.41
Type	Vacant Land
Sub-Type	Freehold



## Community Information

Address 1402 / 1404 Inkar Road Lot# 1 & 2  
Subdivision Springfield/Spall  
City Kelowna  
Province British Columbia  
Postal Code V1Y8H7

## Amenities

Utilities Electricity, Natural Gas, Sewer, Water

## Additional Information

Zoning Unknown

## Listing Details

Listing Office Coldwell Banker Horizon Realty



The trademarks MLS®, Multiple Listing Service® and the associated logos are owned by The Canadian Real Estate Association (CREA) and identify the quality of services provided by real estate professionals who are members of CREA. REALTOR®. Member of CREA and more.

Listing information last updated on October 13th, 2025 at 12:01pm CDT