

\$349,000 - 2802 Lower Wynndel Road, Wynndel

MLS® #10338506

\$349,000

0 Bedroom, 0.00 Bathroom,
Vacant Land on 6.88 Acres

Wynndel/Lakeview, Wynndel, British Columbia

6.88 Acres - 1 Km. from Creston . Build your Kootenay Dream here! Rarely does an undeveloped acreage this close to Creston come on the market !!! The possibilities seem endless with 6.88 lush acres of level cultivated land , graced with sweeping panoramic mountain views , located only 1.5 km from all the conveniences of town. A well made 59'x39' Shed/Barn clad with Metal and Metal Roof. Complete with Water, power, another 28'x20' outbuilding , add tremendous value to those who have been longing to have their own hobby farm or horse ranch. All that remains is deciding which picturesque spot you'd like to build your home or place a Modular , Mobile or RV ! Acreages like this one are few and far between . (id:6289)

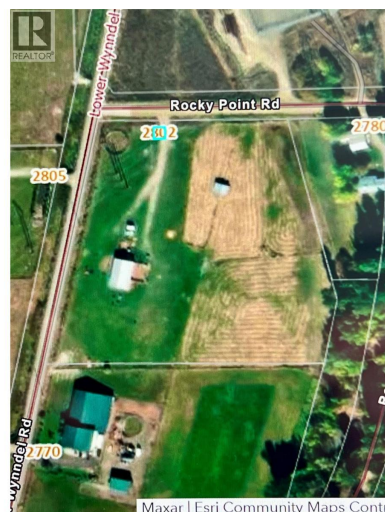


Essential Information

Listing #	10338506
Price	\$349,000
Bathrooms	0.00
Acres	6.88
Type	Vacant Land
Sub-Type	Freehold

Community Information

Address	2802 Lower Wynndel Road
Subdivision	Wynndel/Lakeview
City	Wynndel



Province British Columbia
Postal Code V0B1G8

Amenities

Amenities Golf Nearby, Public Transit, Airport, Park, Recreation, Schools, Shopping
Utilities Electricity, Telephone, Water
Features Level lot
View Valley view
Is Waterfront Yes
Waterfront Waterfront on creek

Exterior

Exterior Features Level

Additional Information

Zoning Agricultural

Listing Details

Listing Office Century 21 Assurance Realty



The trademarks MLS®, Multiple Listing Service® and the associated logos are owned by The Canadian Real Estate Association (CREA) and identify the quality of services provided by real estate professionals who are members of CREA. REALTOR®. Member of CREA and more.

Listing information last updated on October 12th, 2025 at 4:46pm CDT