

# \$984,500 - 1331 Beldaire Avenue, Kelowna

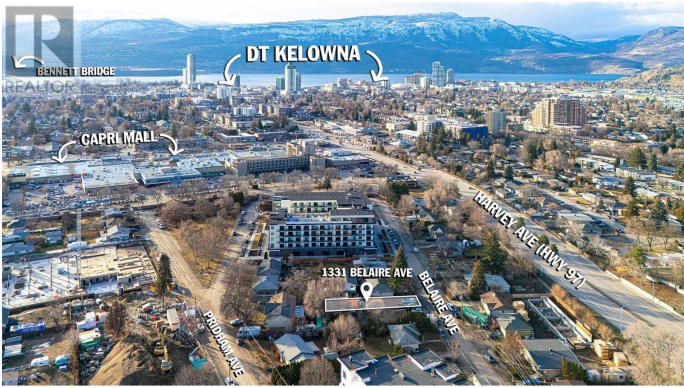
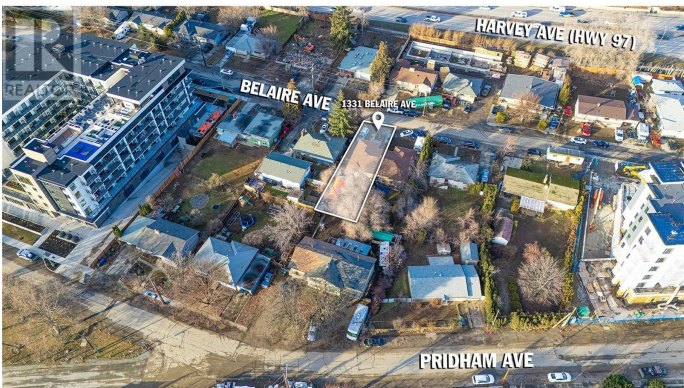
MLS® #10338884

**\$984,500**

0 Bedroom, 0.00 Bathroom,  
Other on 0.11 Acres

Springfield/Spall, Kelowna, British Columbia

Capri-Landmark! One of Kelowna’s Largest Activity Hubs! Urban Centre UC2 Zoned! Excellent holding/investment properties for future assembly development. Official Community Plan has a 12-story height designation and a UC2 Capri Landmark Zoning Bylaw with a base 3.3 FAR. See Zoning Bylaw Section 14.14. High Density, Growing Urban Residential Area with multiple transit routes, high walking and biking scores, nearby retail, businesses, services, shopping, schools, amenities and more. At present, there are 5 connected properties listed for sale totaling .55 of an Acre with a combined list price of \$4,985,000. UC2 zoning supports a variety of mixed-use development opportunities including retail, office and residential. Beldaire/Pridham Avenue is currently active with new developments reshaping the much-anticipated form, function and residential growth in this vibrant urban center neighborhood. (id:6289)



## Essential Information

Listing #	10338884
Price	\$984,500
Bathrooms	0.00
Acres	0.11
Type	Other

## Community Information

Address	1331 Beldaire Avenue
Subdivision	Springfield/Spall
City	Kelowna
Province	British Columbia
Postal Code	V1Y6B8

### Amenities

Parking Spaces	2
Parking	Other

### Interior

Heating	Forced air, See remarks
---------	-------------------------

### Exterior

Exterior	Stone, Vinyl siding, Wood siding
Roof	Asphalt shingle

### Additional Information

Zoning	Unknown
--------	---------

### Listing Details

Listing Office	RE/MAX Kelowna
----------------	----------------



The trademarks MLS®, Multiple Listing Service® and the associated logos are owned by The Canadian Real Estate Association (CREA) and identify the quality of services provided by real estate professionals who are members of CREA. REALTOR®. Member of CREA and more.

Listing information last updated on October 13th, 2025 at 8:46pm CDT