

# \$579,900 - 3090 Burtch Road Unit# 214, Kelowna

MLS® #10345033

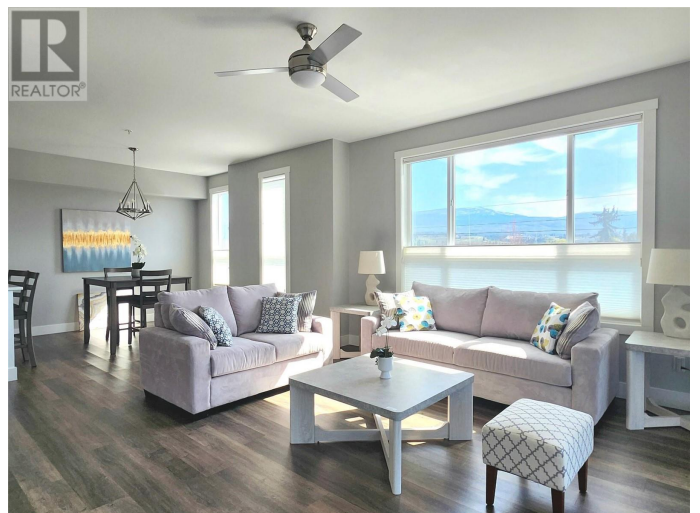
**\$579,900**

2 Bedroom, 2.00 Bathroom, 1,115 sqft

Single Family

Osprey Landing, Kelowna, British Columbia

Pleased to offer this delightfully bright and spacious Corner unit in the popular Osprey Landing on KLO Rd. This feature packed unit comes with spacious 2 Bedrooms and a large living room complimented by a modern kitchen that is surrounded by natural light through oversized windows throughout the unit. Check out the thoughtfully crafted floor plan, you will definitely be satisfied. This one is one of the largest and the best floor plan in the building. Modern European inspired Kitchen with peninsula offers ample space for all your gourmet meals. The spacious living area will be one of the best you will see on your tour. Facing South and West, this unit is flooded with natural light in every corner of the unit. You have lots of stuff? Don't worry, you will be pleased with the two Large storage units, one of which is approx. 11ft by 4ft. Both Storage units are on the same floor with one is conveniently located on the balcony. This feature packed unit even comes with two spacious 2 underground parking spots. No compromises needed here. Hit the gym with shower before soaking in hot tub and wind down your day on the balcony with the view of sunset over the mountain before cozing up for the night! The spacious bedrooms quiet and perfect for a peaceful night. Located in the heart of Kelowna with easy access to all the amenities and top-rated schools including Okanagan College. (id:6289)



Built in 2021

## Essential Information

|                |                   |
|----------------|-------------------|
| Listing #      | 10345033          |
| Price          | \$579,900         |
| Bedrooms       | 2                 |
| Bathrooms      | 2.00              |
| Square Footage | 1,115             |
| Year Built     | 2021              |
| Type           | Single Family     |
| Sub-Type       | Strata            |
| Style          | Split level entry |

## Community Information

|             |                            |
|-------------|----------------------------|
| Address     | 3090 Burtch Road Unit# 214 |
| Subdivision | Osprey Landing             |
| City        | Kelowna                    |
| Province    | British Columbia           |
| Postal Code | V1W5G9                     |

## Amenities

|                |  |
|----------------|--|
| Amenities      | Public Transit, Recreation, Schools, Shopping, Whirlpool, Storage - Locker |
| Utilities      | Cable, Electricity, Telephone  |
| Features       | One Balcony  |
| Parking Spaces | 2  |
| Parking        | Underground  |

## Interior

|              |   |
|--------------|---|
| Appliances   | Refrigerator, Dishwasher, Range - Electric, Microwave, Washer & Dryer |
| Heating      | Electric Baseboard heaters  |
| Cooling      | Wall unit   |
| # of Stories | 1   |

## Exterior

|                   |              |
|-------------------|--------------|
| Exterior          | Wood         |
| Exterior Features | Landscaped   |
| Roof              | Tar & gravel |

## Additional Information

|        |         |
|--------|---------|
| Zoning | Unknown |
|--------|---------|

## Listing Details

Listing Office      Royal LePage Kelowna



The trademarks MLS®, Multiple Listing Service® and the associated logos are owned by The Canadian Real Estate Association (CREA) and identify the quality of services provided by real estate professionals who are members of CREA. REALTOR®. Member of CREA and more.

Listing information last updated on October 13th, 2025 at 10:16am CDT