

\$795,000 - 4820 6 Highway, Winlaw

MLS® #10347956

\$795,000

4 Bedroom, 2.00 Bathroom, 2,380 sqft

Single Family on 11.94 Acres

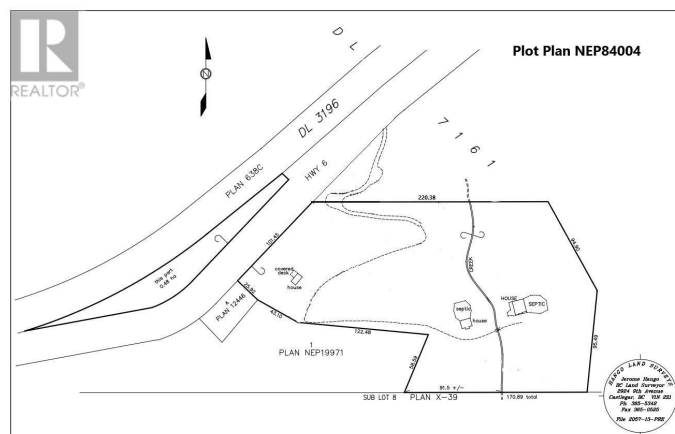
Passmore/Winlaw/Slocan, Winlaw, British Columbia

Nestled in a mature forest setting, this property boasts two charming homes and a rental cabin on a scenic 11.94-acre lot. The "Mountain Home" features 3 bedrooms, 1.5 baths, and a crystalline stone-mason chimney, while the "Cedar Home" boasts 3 bedrooms, 1 bath, and a full footprint walkout basement. Enjoy the peaceful sound of Bodini Creek as you relax porch-side, nourished by a constant supply of pristine spring water. With no zoning restrictions, this property offers opportunities for extended family homes, bed & breakfast lodging, or shop. The lot has great potential for further development with a flat building area on a lower bench which requires some clearing, which will net you some building material. Conveniently located just 35 minutes from both Nelson and Castlegar. Contact your REALTOR. for interior photos and respect tenant's privacy. (id:6289)

Built in 1978

Essential Information

| | |
|----------------|-----------|
| Listings # | 10347956 |
| Price | \$795,000 |
| Bedrooms | 4 |
| Bathrooms | 2.00 |
| Half Baths | 1 |
| Square Footage | 2,380 |
| Acres | 11.94 |



| | |
|------------|---------------|
| Year Built | 1978 |
| Type | Single Family |
| Sub-Type | Freehold |

Community Information

| | |
|-------------|------------------------|
| Address | 4820 6 Highway |
| Subdivision | Passmore/Winlaw/Slocan |
| City | Winlaw |
| Province | British Columbia |
| Postal Code | V0G2J0 |

Amenities

| | |
|----------------|-------------------------------|
| Utilities | Electricity, Telephone, Water |
| Parking Spaces | 99 |
| Is Waterfront | Yes |
| Waterfront | Waterfront on creek |

Interior

| | |
|-----------------|---|
| Appliances | Refrigerator, Dryer, Range - Electric, Washer |
| Heating | Baseboard heaters |
| Fireplace | Yes |
| # of Fireplaces | 1 |
| Fireplaces | Wood |
| # of Stories | 2 |

Exterior

| | |
|----------|-----------------|
| Exterior | Wood |
| Roof | Asphalt shingle |

Additional Information

| | |
|--------|-------------|
| Zoning | See Remarks |
|--------|-------------|

Listing Details

| | |
|----------------|--|
| Listing Office | Coldwell Banker Rosling Real Estate (Nelson) |
|----------------|--|



The trademarks MLS®, Multiple Listing Service® and the associated logos are owned by The Canadian Real Estate Association (CREA) and identify the quality of services provided by real estate professionals who are members of

