

\$899,000 - 580 Spruceview Place N, Kelowna

MLS® #10359560

\$899,000

4 Bedroom, 2.00 Bathroom, 1,893 sqft

Single Family on 0.14 Acres

Glenmore, Kelowna, British Columbia

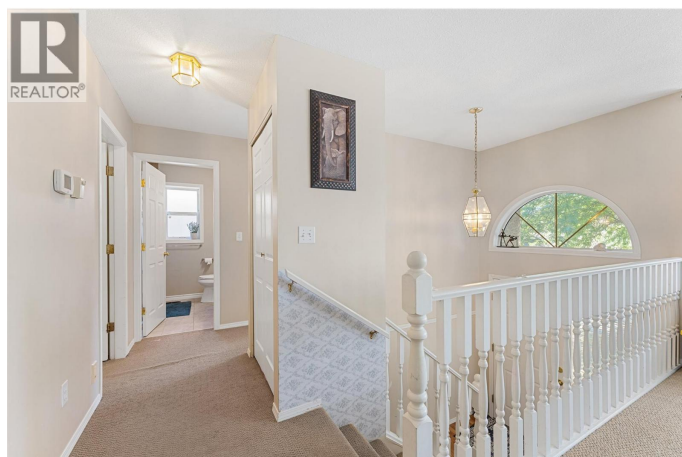
Located on a quiet street in the Glenmore neighbourhood, this 4-bedroom, 3-bath home offers easy access to a nearby community park and is within walking distance to hiking and biking trails. The large, grassy front yard is framed by mature trees and shrubs, with driveway parking for two and an attached double garage with a man-door and window. The main level features a bright living room with bay windows, an adjoining dining area with walkout to a front sundeck, and a kitchen with a peninsula, breakfast nook, and backyard access. Appliances include an LG dishwasher, Whirlpool electric range, Whirlpool fridge, and microwave. The primary bedroom has a double-door closet and 4-piece ensuite. Two additional bedrooms and a 4-piece main bathroom complete the upper floor. The lower level includes a carpeted recreation room, a tiled gas fireplace with a wood mantel, a fourth bedroom or office, laundry, and ample storage. The fully fenced backyard offers a grassy area, mature landscaping, and a back deck. Excellent location just minutes to downtown Kelowna. New HVAC system installed June 2025. (id:6289)

Built in 1992

Essential Information

Listing # 10359560

Price \$899,000



Bedrooms	4
Bathrooms	2.00
Half Baths	1
Square Footage	1,893
Acres	0.14
Year Built	1992
Type	Single Family
Sub-Type	Freehold

Community Information

Address	580 Spruceview Place N
Subdivision	Glenmore
City	Kelowna
Province	British Columbia
Postal Code	V1V1S7

Amenities

Amenities	Golf Nearby, Park, Recreation, Schools, Shopping
Features	Balcony, One Balcony
Parking Spaces	4
Parking	Attached Garage
# of Garages	2
View	Mountain view, View (panoramic)

Interior

Appliances	Refrigerator, Dishwasher, Dryer, Range - Electric, Microwave, Washer
Heating	Forced air, See remarks
Cooling	Central air conditioning
Fireplace	Yes
# of Fireplaces	1
Fireplaces	Gas
# of Stories	2

Exterior

Exterior	Stucco
Exterior Features	Landscaped
Roof	Asphalt shingle

Additional Information

Zoning

Unknown

Listing Details

Listing Office

Unison Jane Hoffman Realty



The trademarks MLS®, Multiple Listing Service® and the associated logos are owned by The Canadian Real Estate Association (CREA) and identify the quality of services provided by real estate professionals who are members of CREA. REALTOR®. Member of CREA and more.

Listing information last updated on October 13th, 2025 at 6:01am CDT