

# \$2,360,184 - 1413 Cherry Crescent, Kelowna

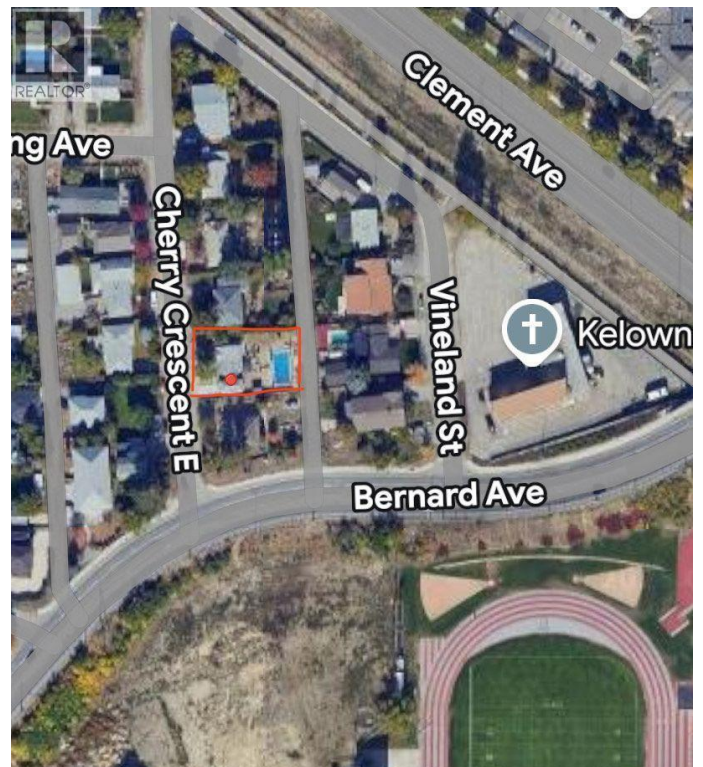
MLS® #10362174

## \$2,360,184

3 Bedroom, 1.00 Bathroom, 2,304 sqft  
Single Family on 0.21 Acres

Glenmore, Kelowna, British Columbia

Prime development opportunity in the heart of Kelowna's urban core! Situated along the Bernard Avenue Transit Supportive Corridor (TSC), this property offers exceptional potential for apartment development under current zoning guidelines. Just steps from the highly anticipated new Parkinson Recreation Centre and minutes to downtown, this site is ideally located in a rapidly evolving, transit-oriented area within the Glenmore neighbourhood. The flat lot and central location make it a strong candidate for multi-unit residential, apartment, or mixed-use development. (id:6289)



Built in 1963

## Essential Information

|                |               |
|----------------|---------------|
| Listings #     | 10362174      |
| Price          | \$2,360,184   |
| Bedrooms       | 3             |
| Bathrooms      | 1.00          |
| Square Footage | 2,304         |
| Acres          | 0.21          |
| Year Built     | 1963          |
| Type           | Single Family |
| Sub-Type       | Freehold      |

## Community Information

|             |                      |
|-------------|----------------------|
| Address     | 1413 Cherry Crescent |
| Subdivision | Glenmore             |

|             |                  |
|-------------|------------------|
| City        | Kelowna          |
| Province    | British Columbia |
| Postal Code | V1Y3Y2           |

### Amenities

|                |                           |
|----------------|---------------------------|
| Utilities      | Electricity, Sewer, Water |
| Parking Spaces | 2                         |
| Parking        | Attached Garage           |
| # of Garages   | 2                         |

### Interior

|              |         |
|--------------|---------|
| Heating      | No heat |
| # of Stories | 2       |

### Additional Information

|        |             |
|--------|-------------|
| Zoning | Residential |
|--------|-------------|

### Listing Details

|                |                            |
|----------------|----------------------------|
| Listing Office | eXp Realty of Canada, Inc. |
|----------------|----------------------------|



The trademarks MLS®, Multiple Listing Service® and the associated logos are owned by The Canadian Real Estate Association (CREA) and identify the quality of services provided by real estate professionals who are members of CREA. REALTOR®. Member of CREA and more.

Listing information last updated on October 13th, 2025 at 7:46pm CDT