

\$414,900 - 780 Houghton Road Unit# 405, Kelowna

MLS® #10362496

\$414,900

2 Bedroom, 2.00 Bathroom, 1,110 sqft

Single Family

Peach Tree Place, Kelowna, British Columbia

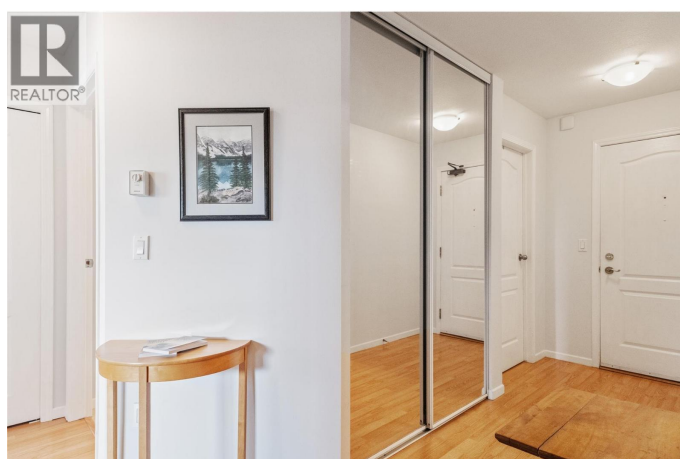
Top-floor unit at Peachtree Place Estates with 2 bedrooms and 2 full bathrooms. This home has been thoughtfully updated with new flooring, windows, and lighting, along with a redesigned kitchen featuring custom cabinets that extend to the ceiling and additional cabinetry topped by a wide countertop with seating. Take in the mountain views from the enclosed patio, updated with new energy-efficient windows and custom blinds, creating a cozy additional seating area. Ideally located across from Ben Lee Park and just steps to groceries and transit, this is an excellent choice for convenient, walkable living. Parking and storage locker included. Restrictions: Rentals allowed, cats allowed with restrictions, sorry no dogs. (id:6289)

Built in 1990

Essential Information

Listings #	10362496
Price	\$414,900
Bedrooms	2
Bathrooms	2.00
Square Footage	1,110
Year Built	1990
Type	Single Family
Sub-Type	Strata
Style	Other

Community Information



Address	780 Houghton Road Unit# 405
Subdivision	Peach Tree Place
City	Kelowna
Province	British Columbia
Postal Code	V1X5G7

Amenities

Parking Spaces	1
Parking	Carport
# of Garages	1

Interior

Heating	Baseboard heaters
Cooling	Wall unit
# of Stories	1

Additional Information

Zoning	Unknown
--------	---------

Listing Details

Listing Office	Oakwyn Realty Okanagan
----------------	------------------------



The trademarks MLS®, Multiple Listing Service® and the associated logos are owned by The Canadian Real Estate Association (CREA) and identify the quality of services provided by real estate professionals who are members of CREA. REALTOR®. Member of CREA and more.

Listing information last updated on October 13th, 2025 at 10:01am CDT