

# \$2,665,800 - 2110 Vasile Road Road, Kelowna

MLS® #10363301

**\$2,665,800**

0 Bedroom, 0.00 Bathroom,  
Vacant Land on 0.34 Acres

Springfield/Spall, Kelowna, British Columbia

Property Zoned UC3 located in the heart of Midtown Urban Centre ! Build up to 6 story condos ,and up to 85% building footprint . Adjoining property directly behind is now under construction building a six story 160 unit with 102 parking stalls. Directly beside Orchard Plaza Shopping Center and just off Hwy 97N. Property has a home on it that is currently rented and will be included with the land. Don't miss out on this incredible location! It is the Buyer's responsibility to check all zoning with the City , and the Seller makes no guarantees. (id:6289)



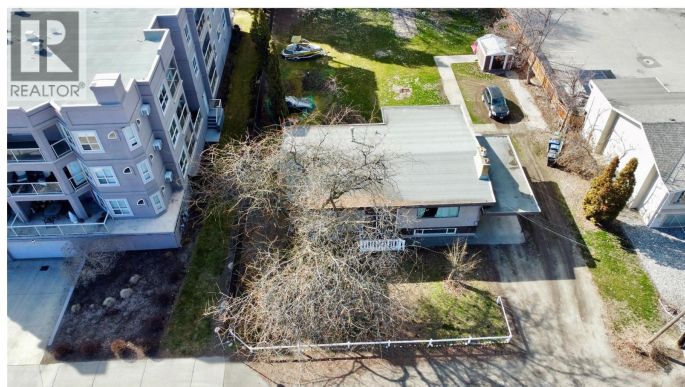
## Essential Information

Listings #	10363301
Price	\$2,665,800
Bathrooms	0.00
Acres	0.34
Type	Vacant Land
Sub-Type	Freehold

## Community Information

Address	2110 Vasile Road Road
Subdivision	Springfield/Spall
City	Kelowna
Province	British Columbia
Postal Code	V1Y6H5

## Amenities



Amenities	Public Transit, Shopping
Utilities	Cable, Electricity, Natural Gas, Telephone, Sewer, Water
Features	Level lot

## Exterior

Exterior Features	Level
-------------------	-------

## Additional Information

Zoning	Unknown
--------	---------

## Listing Details

Listing Office	Oakwyn Realty Okanagan
----------------	------------------------



The trademarks MLS®, Multiple Listing Service® and the associated logos are owned by The Canadian Real Estate Association (CREA) and identify the quality of services provided by real estate professionals who are members of CREA. REALTOR®. Member of CREA and more.

Listing information last updated on October 13th, 2025 at 12:31pm CDT