

# \$ - 168 Asher Road, Kelowna

MLS® #10363628

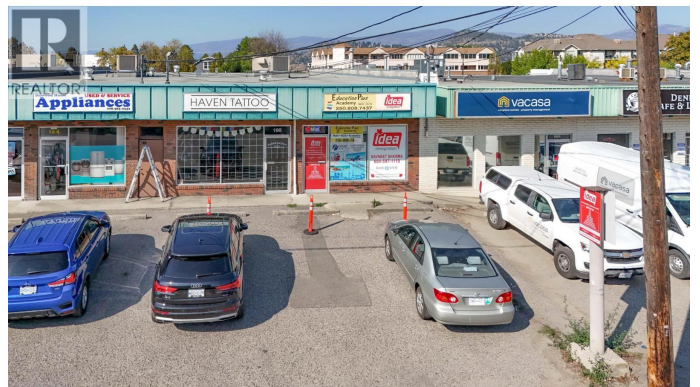
\$

0 Bedroom, 0.00 Bathroom, 2,085 sqft

Other

Rutland North, Kelowna, British Columbia

**FACADE UPDATE IN PROGRESS!** In-line, street level, commercial space available in the Asher Complex, located in the heart of the Rutland Urban Centre. Approx. 2,085 SF of versatile commercial space including a large open work area or retail area to the front of the unit, 5 individual offices to the rear of the unit along with a washroom and storage room. Parking available to the front and rear of the unit. Centrally located, close to restaurants, coffee shops, banks, boutique businesses, public transportation and only a short walk to Plaza 33. Sorry, no food uses. (id:6289)



## Essential Information

Listing #	10363628
Bathrooms	0.00
Square Footage	2,085
Type	Other

## Community Information

Address	168 Asher Road
Subdivision	Rutland North
City	Kelowna
Province	British Columbia
Postal Code	V1X3H6

## Exterior

Roof	Other
------	-------

## Additional Information

Zoning

Unknown

## Listing Details

Listing Office

RE/MAX Kelowna



The trademarks MLS®, Multiple Listing Service® and the associated logos are owned by The Canadian Real Estate Association (CREA) and identify the quality of services provided by real estate professionals who are members of CREA. REALTOR®. Member of CREA and more.

Listing information last updated on October 14th, 2025 at 10:31am CDT