

\$ - 1751 Harvey Avenue, Kelowna

MLS® #10364648

\$

0 Bedroom, 0.00 Bathroom, 1,105 sqft

Other

Springfield/Spall, Kelowna, British Columbia

1,105 sq. ft. warehouse space available in Kelowna's Landmark District. This functional unit features an overhead loading door with convenient rear-lane access, shared washroom facilities, and one dedicated parking stall. Centrally located with excellent connectivity to Highway 97 and Springfield Road, this space is ideal for a variety of light industrial or storage uses. Triple Net lease includes the cost of power and gas. Available immediately. (id:6289)

Essential Information

Listing #	10364648
Bathrooms	0.00
Square Footage	1,105
Type	Other

Community Information

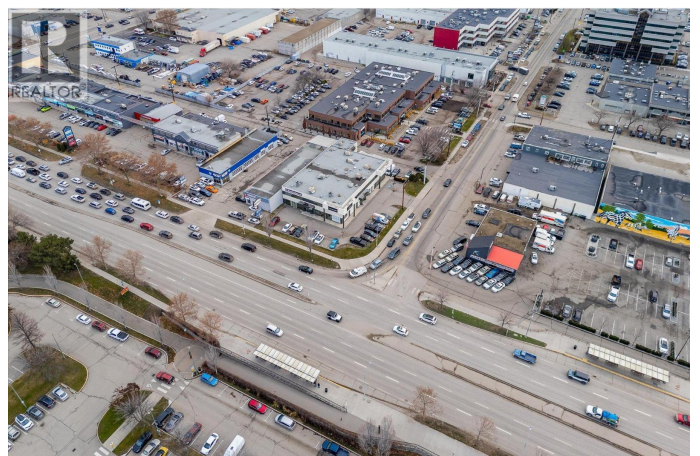
Address	1751 Harvey Avenue
Subdivision	Springfield/Spall
City	Kelowna
Province	British Columbia
Postal Code	V1Y6G4

Additional Information

Zoning	Unknown
--------	---------

Listing Details

Listing Office	Realtymonx
----------------	------------



The trademarks MLS®, Multiple Listing Service® and the associated logos are owned by The Canadian Real Estate Association (CREA) and identify the quality of services provided by real estate professionals who are members of CREA. REALTOR®. Member of CREA and more.

Listing information last updated on October 13th, 2025 at 4:31pm CDT