

\$989,000 - 1960 Klo Road Unit# 50, Kelowna

MLS® #10364691

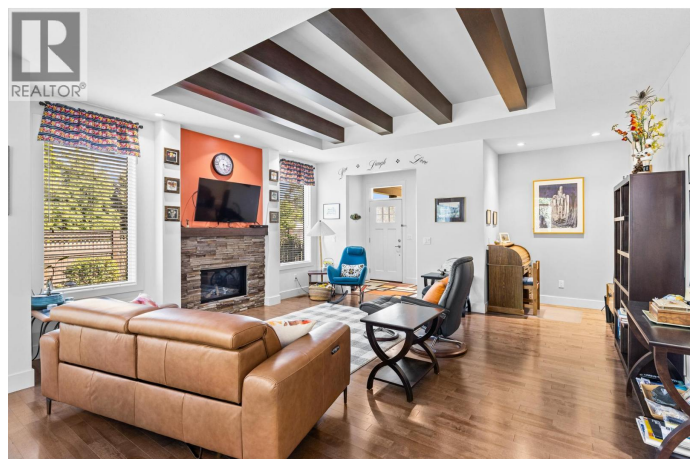
\$989,000

2 Bedroom, 2.00 Bathroom, 1,407 sqft

Single Family

Gablecraft in the Mission, Kelowna, British Columbia

Welcome to Gablecraft in the Mission! This beautiful corner townhome offers a rare combination of privacy, style, and functionality in one of Kelowna's most sought-after complexes. With mature landscaping, and timeless curb appeal including stone accents, tiled terrace, and a charming front gate, this home stands out from the rest. Inside, you'll find a thoughtful two-bedroom, two-bathroom layout with bedrooms set on opposite sides of the entry hall for added privacy. Soaring ceilings and oversized windows fill the home with natural light, while quality finishes like granite counters, custom tile work, and double sinks in the primary ensuite provide a touch of luxury. The open-concept living and dining areas flow seamlessly into a chef-inspired kitchen featuring a large island, GE stainless steel appliances, soft-close cabinetry, and ample workspace, perfect for both everyday living and entertaining. A gas fireplace, upgraded ceiling beams, and sliding glass doors to the back patio with views of the southeast hills add warmth and character. Additional features include a spacious double garage, a convenient laundry room just off the kitchen, and a versatile flex area that adapts to your lifestyle. Fully fenced private yard with concrete patio area. (id:6289)



Built in 2016

Essential Information

Listing #	10364691
Price	\$989,000
Bedrooms	2
Bathrooms	2.00
Square Footage	1,407
Year Built	2016
Type	Single Family
Sub-Type	Strata
Style	Ranch

Community Information

Address	1960 Klo Road Unit# 50
Subdivision	Gablecraft in the Mission
City	Kelowna
Province	British Columbia
Postal Code	V1W5L2

Amenities

Features	Central island
Parking Spaces	2
Parking	Attached Garage
# of Garages	2

Interior

Appliances	Refrigerator, Dishwasher, Dryer, Cooktop - Electric, Washer
Heating	Forced air, See remarks
Cooling	Central air conditioning
Fireplace	Yes
# of Fireplaces	1
Fireplaces	Gas
# of Stories	1

Exterior

Exterior	Other
Roof	Asphalt shingle

Additional Information

Zoning	Unknown
--------	---------

Listing Details

Listing Office RE/MAX Kelowna



The trademarks MLS®, Multiple Listing Service® and the associated logos are owned by The Canadian Real Estate Association (CREA) and identify the quality of services provided by real estate professionals who are members of CREA. REALTOR®. Member of CREA and more.

Listing information last updated on October 13th, 2025 at 8:31pm CDT