

\$1,024,000 - 2957 Conlin Court Unit# 1, Kelowna

MLS® #10364989

\$1,024,000

4 Bedroom, 3.00 Bathroom, 1,552 sqft

Single Family

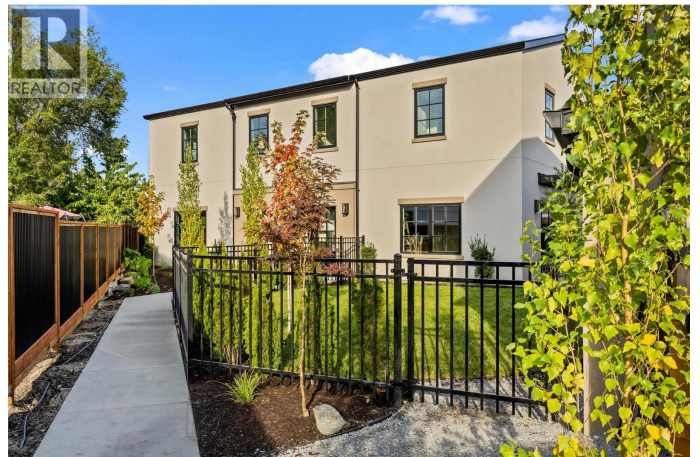
Conlin Court, Kelowna, British Columbia

Part of an exclusive five-home collection by Worman Homes, this brand-new 4-bedroom residence offers the space, style, and comfort of a single-family home in a premium duplex setting. Its spacious private back yard makes it one of the most sought-after homes in the community – perfect for relaxing, entertaining, or enjoying sunny Kelowna days. Inside, you’ll find exposed timber ceilings, custom shaker cabinetry, quartz counters, LG appliances, and main floor laundry with a stacking Whirlpool washer/dryer, plus a powder room for guests. Upstairs, the primary suite features a dual-sink ensuite, with three additional bedrooms, a full bath, and a spacious bonus room perfect for a home office, playroom, or media room. With a double side-by-side garage, quiet cul-de-sac location, and proximity to Okanagan College, KLO Middle School, shops, dining, and the lake, this Worman-built home checks every box. (id:6289)

Built in 2025

Essential Information

Listing #	10364989
Price	\$1,024,000
Bedrooms	4
Bathrooms	3.00
Half Baths	1
Square Footage	1,552



Year Built	2025
Type	Single Family
Sub-Type	Strata

Community Information

Address	2957 Conlin Court Unit# 1
Subdivision	Conlin Court
City	Kelowna
Province	British Columbia
Postal Code	V1Y7S7

Amenities

Parking Spaces	2
Parking	Attached Garage
# of Garages	2

Interior

Heating	Forced air
Cooling	Heat Pump
# of Stories	2

Additional Information

Zoning	Unknown
--------	---------

Listing Details

Listing Office	RE/MAX Kelowna
----------------	----------------



The trademarks MLS®, Multiple Listing Service® and the associated logos are owned by The Canadian Real Estate Association (CREA) and identify the quality of services provided by real estate professionals who are members of CREA. REALTOR®. Member of CREA and more.

Listing information last updated on October 13th, 2025 at 6:16am CDT