

\$349,900 - 250 Main Street, Embree

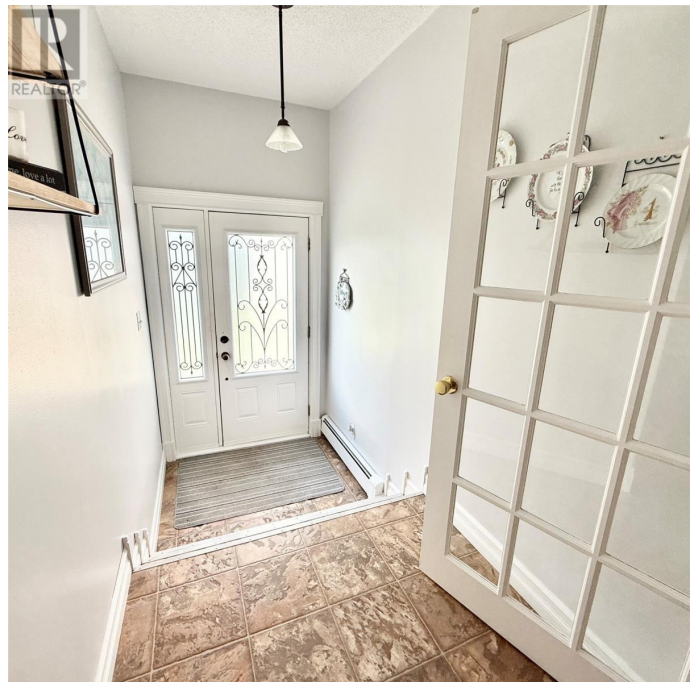
MLS® #1291093

\$349,900

3 Bedroom, 1.00 Bathroom, 2,588 sqft
Single Family

N/A, Embree, Newfoundland & Labrador

Welcome to 250 Main Street in Embree—a beautifully maintained family home offered to the market for the first time. Built in 1991 and lovingly cared for by the original owners, this spacious property offers over 2,600 sq. ft. of living space designed for comfort, functionality, and potential. The main level features three large bedrooms, two full bathrooms, and a bright, inviting layout. A sunken living room with a charming window seat adds character, while the chef's kitchen with oversized island is perfect for meal prep, entertaining, or gathering with family. The dining area flows seamlessly into the living space, and a convenient laundry room completes the level. Tastefully furnished and move-in ready, this home is truly turnkey. The basement offers its own entrance and unlimited possibilities—ideal for an in-law suite, rental apartment, guest quarters, or business use. Peace of mind comes with many recent upgrades including a new hot water radiant boiler system (2023), appliances (2023), updated PEX plumbing (2023), hot water tank (2022), roof shingles (2019), blown-in insulation, and a 200 AMP electrical service ready for future additions. Outside, the landscaped grounds feel like a private retreat, with mature trees, flowering shrubs, herbs, and fruit-bearing chestnut and plum trees. Ample storage and workspace are provided by a 30' x 20' boat shed, 28' x 24' wired garage, storage shed, and seasonal storage tent. Located in a quiet, family-friendly area just minutes from



Lewisporte, this property offers the perfect blend of peaceful living with nearby amenities. A new survey will be provided prior to closing. Donâ€™t miss your chance to own this exceptional homeâ€”contact your REALTORÂ® today for a private showing!
(id:6289)

Built in 1991

Essential Information

Listing #	1291093
Price	\$349,900
Bedrooms	3
Bathrooms	1.00
Square Footage	2,588
Year Built	1991
Type	Single Family
Sub-Type	Freehold

Community Information

Address	250 Main Street
Subdivision	N/A
City	Embree
Province	Newfoundland & Labrador
Postal Code	A0G2A0

Amenities

Amenities	Recreation
Parking	Detached Garage
# of Garages	1

Interior

Interior Features	Drapes/Window coverings
Appliances	Dishwasher, Refrigerator, Microwave, Stove, Washer, Dryer
Heating	Electric, Wood Hot water radiator heat
Fireplace	Yes
Fireplaces	Wood
# of Stories	1

Exterior

Exterior	Brick, Vinyl siding
Exterior Features	Landscaped
Foundation	Concrete

Listing Details

Listing Office	Keller Williams Platinum Realty
----------------	---------------------------------



The trademarks MLS®, Multiple Listing Service® and the associated logos are owned by The Canadian Real Estate Association (CREA) and identify the quality of services provided by real estate professionals who are members of CREA. REALTOR®. Member of CREA and more.

Listing information last updated on October 14th, 2025 at 11:03pm CDT