

\$59,000 - 72 Lorne Falls, Worthington

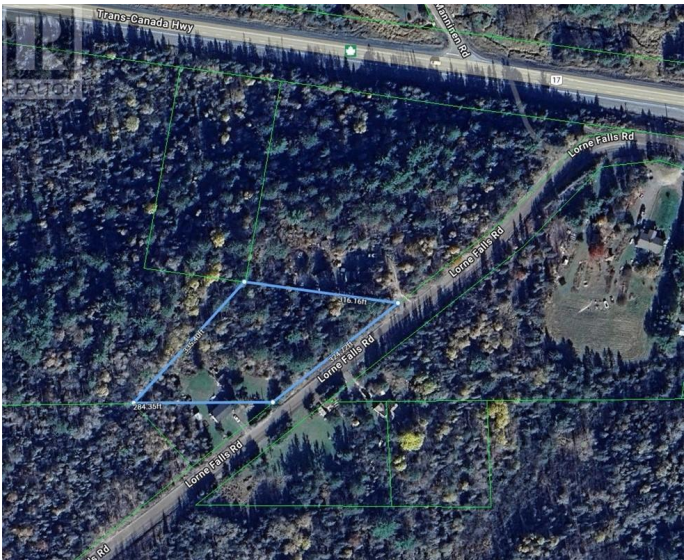
MLS® #2122454

\$59,000

0 Bedroom, 0.00 Bathroom,
Vacant Land

N/A, Worthington, Ontario

Private, Treed Building Lot – Just 30–40 Minutes from Sudbury! Looking to build your dream home in a peaceful, natural setting? This approx. 1.5-acre vacant land could be exactly what you're searching for. Located just off Lorne Falls Road, with easy access via the bypass near Lively, you're a quick drive to the amenities of both Lively and Espanola. In June 2022, a culvert and driveway were professionally installed, giving you a head start on development. The property is heavily treed with stunning, mature pines, offering excellent privacy and a serene, forested backdrop. This area is perfect for outdoor enthusiasts, offering countless opportunities for recreation year-round. Whether you're imagining a cozy cabin or a custom family home, this private country lot at the city's doorstep offers the best of both worlds. (id:6289)



Essential Information

Listing #	2122454
Price	\$59,000
Bathrooms	0.00
Type	Vacant Land
Sub-Type	Freehold

Community Information

Address	72 Lorne Falls
Subdivision	N/A
City	Worthington

Province Ontario
Postal Code P0M3H0

Amenities

Parking Gravel

Listing Details

Listing Office RE/MAX CROWN REALTY (1989) INC., BROKERAGE (SUDBURY)



The trademarks MLS®, Multiple Listing Service® and the associated logos are owned by The Canadian Real Estate Association (CREA) and identify the quality of services provided by real estate professionals who are members of CREA. REALTOR®. Member of CREA and more.

Listing information last updated on October 12th, 2025 at 4:46pm CDT