

\$ - 1395 Tecumseh Road East Unit# Lower, Windsor

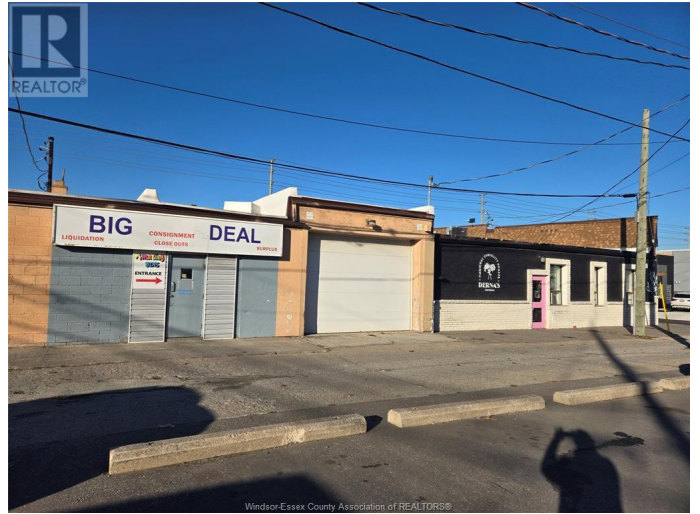
MLS® #25018517

\$

0 Bedroom, 0.00 Bathroom, 14,000 sqft
Industrial

N/A, Windsor, Ontario

APPROX. 14,000 SF OF RETAIL SPACE IS NOW AVAILABLE IN A HIGH PROFILE COMMERCIAL PLAZA BLOCK ON TECUMSEH RD. BETWEEN MOY AND HALL AVE. LOCATED IN THE LOWER LEVEL, VARIOUS UNIT SIZES ARE AVAILABLE FOR MANY USES . PERFECT FOR GYM/MARTIAL ARTS, RETAIL AND STORAGE .GREAT CENTRALIZED LOCATION, SEPARATE ENTRANCES AT THE BACK OF THE PLAZA. PLENTY OF LOADING AREA WITH ITS OWN PARKING LOT AT THE BACK, ADDING CONVENIENCE AND EASY ACCESSIBILITY. CALL L/S TO ARRANGE A TOUR. (id:6289)



Essential Information

Listing #	25018517
Bathrooms	0.00
Square Footage	14,000
Type	Industrial
Sub-Type	Freehold

Community Information

Address	1395 Tecumseh Road East Unit# Lower
Subdivision	N/A
City	Windsor
Province	Ontario
Postal Code	N8W2B9

Interior

Heating

Natural gas Forced air

Cooling

Central air conditioning

Listing Details

Listing Office

ROYAL LEPAGE BINDER REAL ESTATE



The trademarks MLS®, Multiple Listing Service® and the associated logos are owned by The Canadian Real Estate Association (CREA) and identify the quality of services provided by real estate professionals who are members of CREA. REALTOR®. Member of CREA and more.

Listing information last updated on October 15th, 2025 at 6:31am CDT