

\$899,900 - 3465-71 Wilkinson Lane, Windsor

MLS® #25019490

\$899,900

0 Bedroom, 0.00 Bathroom,
Industrial

N/A, Windsor, Ontario

GREAT LOCATION IN SANDWICH TOWN, LAND RUNS UP TO SANDWICH STREET AND CLOSE TO RIVERFRONT. PPTY ALSO INCLUDES ADJACENT LOT 51 X 176 AND 52 X 80 WITH THE GARAGE. APPROX 22 YR OLD METAL BLDG W/STEEL ROOF. APPROX 1120 SQ FT, 14 FT HIGH, FENCED YARD, LOTS OF PARKING, 2PC BATH, MEZZANINE W/LOTS OF STORAGE. LARGE LIST OF OPTION THAT THE PROPERTY CAN BE USED FOR, LIST OF USES ARE IN THE DOCS. SOIL WAS RECENTLY ENVIRONMENTALLY TESTED. (id:6289)

Built in 2002

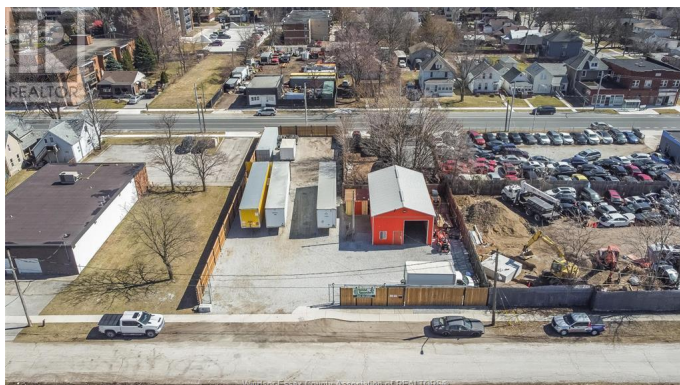
Essential Information

Listing #	25019490
Price	\$899,900
Bathrooms	0.00
Year Built	2002
Type	Industrial
Sub-Type	Freehold

Community Information

Address	3465-71 Wilkinson Lane
Subdivision	N/A
City	Windsor
Province	Ontario
Postal Code	N9C1N2

Interior



Heating

Natural gas Baseboard heaters, Furnace

Listing Details

Listing Office

REMAX CARE REALTY



The trademarks MLS®, Multiple Listing Service® and the associated logos are owned by The Canadian Real Estate Association (CREA) and identify the quality of services provided by real estate professionals who are members of CREA. REALTOR®. Member of CREA and more.

Listing information last updated on October 15th, 2025 at 6:31am CDT