

# \$649,900 - 1500 Pillette, Windsor

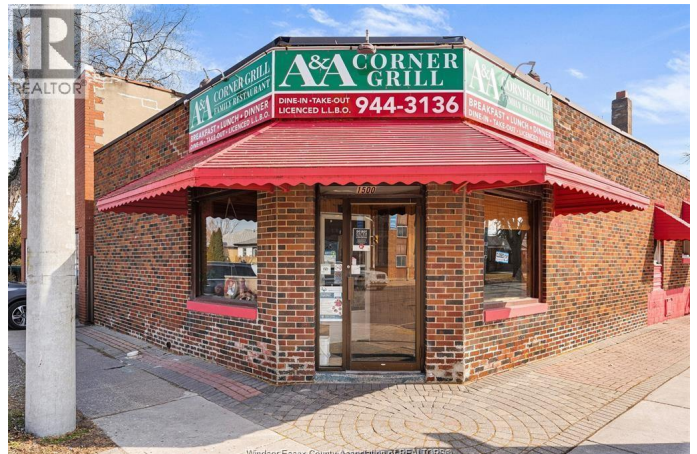
MLS® #25021144

**\$649,900**

0 Bedroom, 0.00 Bathroom, 1,710 sqft  
Industrial

N/A, Windsor, Ontario

GREAT OPPORTUNITY TO OWN THIS WELL ESTABLISHED LONG-TERM RESTAURANT, WITH AN ADDITIONAL RESIDENTIAL UNIT ATTACHED TO THE BACK (SEPARATE HYDRO METER). THE BUSINESS HAS BEEN SUCCESSFULLY OPERATING FOR OVER 20 YEARS, AND ALL THE KITCHEN EQUIPMENT WILL BE INCLUDED. FRONT AND REAR PARKING HAS 9 PARKING SPOTS. THIS BUSINESS IS LIQUOR LICENSED WITH SEATING FOR 20+. THE RESIDENTIAL UNIT COMES WITH ONE BEDROOM, KITCHEN, AND ONE BATHROOM. ROOF(2019), ROOF TOP FURNACE/AC 15YEARS. PRICE INCLUDES BUILDING, LAND, AND BUSINESS. This PPTY can be purchased together with the adjacent PPTY 4727 Seminole(asking \$649,900)) as a package. (id:6289)



## Essential Information

Listing #	25021144
Price	\$649,900
Bathrooms	0.00
Square Footage	1,710
Type	Industrial
Sub-Type	Freehold

## Community Information

Address	1500 Pillette
Subdivision	N/A

City	Windsor
Province	Ontario
Postal Code	N8Y3C2

### **Amenities**

Features	Corner Site
----------	-------------

### **Interior**

Heating	Natural gas Forced air, Furnace
Cooling	Central air conditioning

### **Listing Details**

Listing Office	KEY SOLUTIONS REALTY LTD.
----------------	---------------------------



The trademarks MLS®, Multiple Listing Service® and the associated logos are owned by The Canadian Real Estate Association (CREA) and identify the quality of services provided by real estate professionals who are members of CREA. REALTOR®. Member of CREA and more.

Listing information last updated on October 13th, 2025 at 7:46pm CDT