

\$1,199,000 - 8510 Baseline, Windsor

MLS® #25021349

\$1,199,000

4 Bedroom, 2.00 Bathroom,
Single Family

N/A, Windsor, Ontario

WELCOME TO 8510 BASELINE RD. THIS CHARMING RAISED RANCH IS COMPLETE WITH 4 BEDROOMS, 2 BATHS, AND LARGE CUSTOM KITCHEN. LOWER LEVEL FINISHED WITH LARGE FAMILY ROOM 2 BEDROOMS AND 4 PIECE BATH. LARGE DECK OFF REAR OVERSEEING THE 2,000 SQ FT OUTBUILDING COMPLETE WITH AUTO HOIST FOR THE CAR ENTHUSIAST. PROPERTY ALSO FEATURES A SMALL BARN EASILY CONVERTED TO MAN CAVE OR SHE SHED. THIS PROPERTY IS AS CLOSE TO COUNTRY LIVING AS YOU CAN HAVE AND STILL BE IN THE CITY. (id:6289)

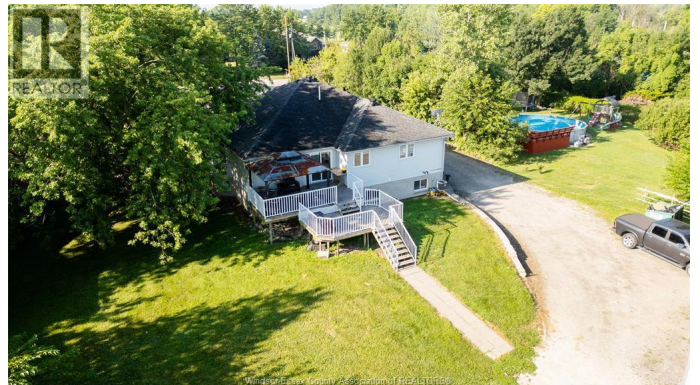
Built in 2005

Essential Information

Listing #	25021349
Price	\$1,199,000
Bedrooms	4
Bathrooms	2.00
Year Built	2005
Type	Single Family
Sub-Type	Freehold
Style	Raised ranch

Community Information

Address	8510 Baseline
Subdivision	N/A
City	Windsor



Province	Ontario
Postal Code	N0R1K0

Amenities

Features	Hobby farm, Double width or more driveway, Front Driveway, Gravel Driveway, Side Driveway
Parking	Attached Garage, Garage
# of Garages	2

Interior

Appliances	Dishwasher, Dryer, Refrigerator, Stove, Washer
Heating	Natural gas Forced air
Cooling	Central air conditioning
Fireplace	Yes
Fireplaces	Gas

Exterior

Exterior	Brick
Exterior Features	Landscaped
Foundation	Concrete

Listing Details

Listing Office	ROYAL LEPAGE BINDER REAL ESTATE
----------------	---------------------------------



The trademarks MLS®, Multiple Listing Service® and the associated logos are owned by The Canadian Real Estate Association (CREA) and identify the quality of services provided by real estate professionals who are members of CREA. REALTOR®. Member of CREA and more.

Listing information last updated on October 13th, 2025 at 9:31pm CDT