

# \$1,100 - 4045 Industrial Drive Unit# A, Windsor

MLS® #25023128

**\$1,100**

0 Bedroom, 0.00 Bathroom, 650 sqft  
Industrial

N/A, Windsor, Ontario

Prime office space available for lease on Industrial Drive! Located in a highly desirable location, just minutes from both the Ambassador Bridge and the new Gordie Howe International Bridge. Enjoy easy access to Highway 401 and the E.C. Row Expressway. This remarkable space offers 650 sq ft of premium office space with the convenience of on-site parking. Asking \$1100 All-inclusive. Don't let this incredible opportunity slip away! Reach out to us today. (id:6289)

## Essential Information

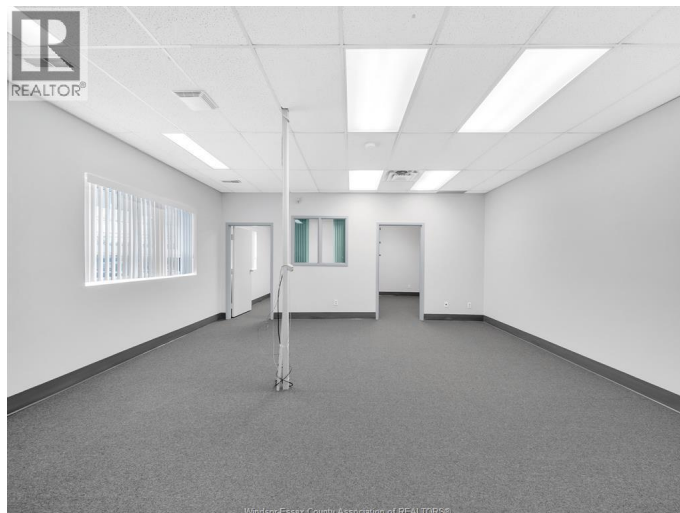
Listing #	25023128
Price	\$1,100
Bathrooms	0.00
Square Footage	650
Type	Industrial
Sub-Type	Freehold

## Community Information

Address	4045 Industrial Drive Unit# A
Subdivision	N/A
City	Windsor
Province	Ontario
Postal Code	N9C3R8

## Listing Details

Listing Office MANOR WINDSOR REALTY LTD.



The trademarks MLS®, Multiple Listing Service® and the associated logos are owned by The Canadian Real Estate Association (CREA) and identify the quality of services provided by real estate professionals who are members of CREA. REALTOR®. Member of CREA and more.

Listing information last updated on October 13th, 2025 at 5:46pm CDT