

\$1,099,000 - 2585 Victoria, Woodslee

MLS® #25024075

\$1,099,000

3 Bedroom, 4.00 Bathroom,
Single Family

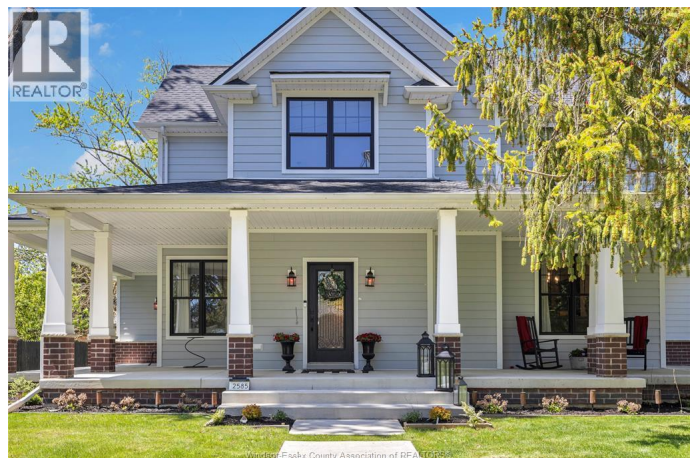
N/A, Woodslee, Ontario

DISCOVER YOUR DREAM HOME IN A SERENE COUNTRY SETTING! THIS EXQUISITE 1 3/4 STOREY CUSTOM BUILT RESIDENCE BOASTS UPSACALE FINISHES THROUGHOUT, INCLUDING GOURMET KITCHEN WITH GRANITE COUNTERTOPS PERFECT FOR THE CULINARY ENTHUSIASTS. ENJOY THE CHARM OF A WRAP AROUND PORCH AND THE ELEGANCE OF SOARING CEILINGS, COMPLEMENTED BY TWO COZY GAS STONE FIREPLACES THAT CREATE A WARM AND INVITING ATMOSPHERE. THE MAIN LEVEL FEATURES A LUXURIOUS MASTER BEDROOM WITH AN IMPRESSIVE ENSUITE, PROVIDING A PRIVATE RETREAT. ADDITIONALLY, THE PARTLY FINISHED BASEMENT OFFERS POTENTIAL FOR CUSTOMIZATION, MAKING THIS HOME A PERFECT BLEND OF COMFORT AND STYLE. THE PRIVATE BACKYARD IS IDEAL FOR RELAXATION AND ENTERTAINING WITH A GAZEBO/HOTTUB, UNIQUE CUSTOM VINTAGE SHED. - THIS BACKYARD IS DESIGNED FOR COMFORT & PRIVACY MAKING IT THE ULTIMATE ESCAPE RIGHT AT HOME PERFECTLY SURROUNDED BY NATURE. (id:6289)

Built in 2022

Essential Information

Listing # 25024075



Price	\$1,099,000
Bedrooms	3
Bathrooms	4.00
Half Baths	1
Year Built	2022
Type	Single Family
Sub-Type	Freehold

Community Information

Address	2585 Victoria
Subdivision	N/A
City	Woodslee
Province	Ontario
Postal Code	N0R1V0

Amenities

Features	Side Driveway
Parking	Attached Garage, Garage, Inside Entry
# of Garages	2

Interior

Appliances	Hot Tub, Dryer, Microwave Range Hood Combo, Refrigerator, Stove, Washer
Heating	Natural gas Forced air, Furnace
Cooling	Central air conditioning
# of Stories	2

Exterior

Exterior	Brick
Exterior Features	Landscaped
Foundation	Concrete

Listing Details

Listing Office	REMAX PREFERRED REALTY LTD. - 585
----------------	-----------------------------------



The trademarks MLS®, Multiple Listing Service® and the associated logos are owned by The Canadian Real Estate Association (CREA) and identify the quality of services provided by real estate professionals who are members of

CREA. REALTOR®. Member of CREA and more.
Listing information last updated on October 13th, 2025 at 3:31am CDT