

\$2,800 - 11900 Thistledown, Windsor

MLS® #25024608

\$2,800

3 Bedroom, 3.00 Bathroom,
Single Family

N/A, Windsor, Ontario

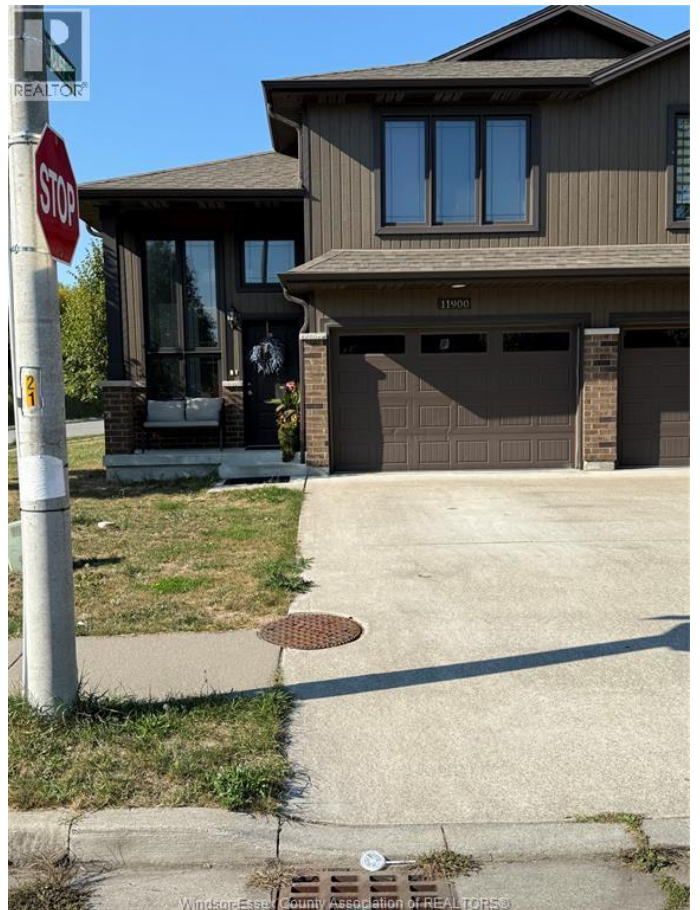
Welcome to 11900 Thistledown Ave - 3 bedroom and 3 full bath Raised Ranch townhouse in east Windsor. The property features a spacious living area with natural light, perfect for entertaining or relaxing. The modern kitchen is equipped with updated appliances and ample storage space. Each bedroom offers comfortable living with generous closet space, while the bathroom features contemporary fixtures and finishes. The backyard provides a private outdoor space, ideal for gatherings or enjoying quiet moments. Located in a desirable neighborhood, this home is close to school, parks, and shopping centre. Minimum 1 year lease rent \$2,800 plus utilities credit check and employment verification is must. (id:6289)

Built in 2016

Essential Information

Listing #	25024608
Price	\$2,800
Bedrooms	3
Bathrooms	3.00
Year Built	2016
Type	Single Family
Sub-Type	Freehold
Style	Raised Ranch w/ Bonus Room

Community Information



Address	11900 Thistledown
Subdivision	N/A
City	Windsor
Province	Ontario
Postal Code	N8P0A1

Amenities

Features	Finished Driveway, Front Driveway
Parking	Garage
# of Garages	1

Interior

Appliances	Dishwasher, Dryer, Refrigerator, Stove, Washer
Heating	Natural gas Forced air
Cooling	Central air conditioning

Exterior

Exterior	Aluminum/Vinyl, Brick
Foundation	Concrete

Listing Details

Listing Office	REMO VALENTE REAL ESTATE (1990) LIMITED
----------------	---



The trademarks MLS®, Multiple Listing Service® and the associated logos are owned by The Canadian Real Estate Association (CREA) and identify the quality of services provided by real estate professionals who are members of CREA. REALTOR®. Member of CREA and more.

Listing information last updated on October 13th, 2025 at 11:16am CDT