

\$429,900 - 1542 Elsmere, Windsor

MLS® #25025100

\$429,900

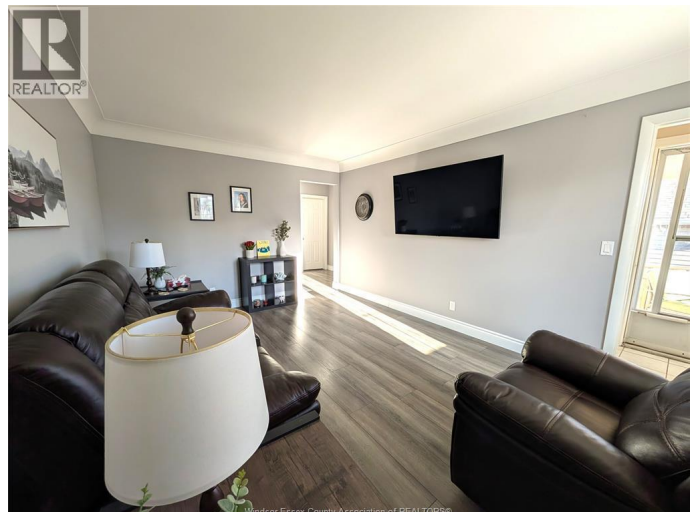
3 Bedroom, 2.00 Bathroom,
Single Family

N/A, Windsor, Ontario

Pride in ownership shines in this Move-In Ready Gem! Perfect for a family, multi-generational living or an investor. This stunning brick to roof ranch is in pristine condition, located in an ideal Walkerville location. Features 3 bedrooms, 2 baths, the finished basement includes a full in-law suite with a second kitchen, separate entrance, additional bedroom, bathroom, laundry, with a generous living space family room. Ideal setting for more room if itâ€™s just for the family, extended family or rental income. Off the kitchen patio doors, enjoy the large deck overlooking your fenced yard, perfect for relaxing or entertaining. The deck was built in 2024, fence 2023, driveway was installed 2024, central air 2020. This home is in a fantastic neighborhood close to parks, schools, shopping, and all the conveniences Windsor has to offer. You will not want to miss this beauty itâ€™s sure to impress, nothing to do but move in and enjoy. (id:6289)

Essential Information

Listing #	25025100
Price	\$429,900
Bedrooms	3
Bathrooms	2.00
Type	Single Family
Sub-Type	Freehold
Style	Bungalow, Ranch



Community Information

Address	1542 Elsmere
Subdivision	N/A
City	Windsor
Province	Ontario
Postal Code	N8X4H3

Amenities

Features	Concrete Driveway, Finished Driveway
----------	--------------------------------------

Interior

Appliances	Dryer, Washer, Two stoves, Two Refrigerators
Heating	Natural gas Forced air, Furnace
Cooling	Central air conditioning
# of Stories	1

Exterior

Exterior	Brick
Exterior Features	Landscaped
Foundation	Block

Listing Details

Listing Office	ROYAL LEPAGE BINDER REAL ESTATE
----------------	---------------------------------



The trademarks MLS®, Multiple Listing Service® and the associated logos are owned by The Canadian Real Estate Association (CREA) and identify the quality of services provided by real estate professionals who are members of CREA. REALTOR®. Member of CREA and more.

Listing information last updated on October 13th, 2025 at 1:31pm CDT