

\$1,400 - 282 Rossini Unit# Lower, Windsor

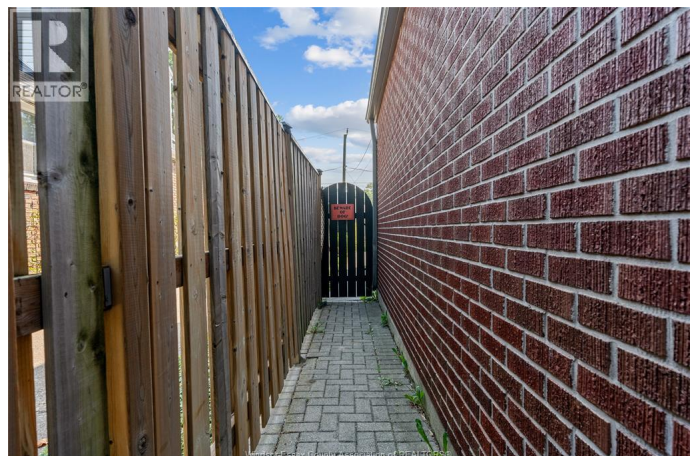
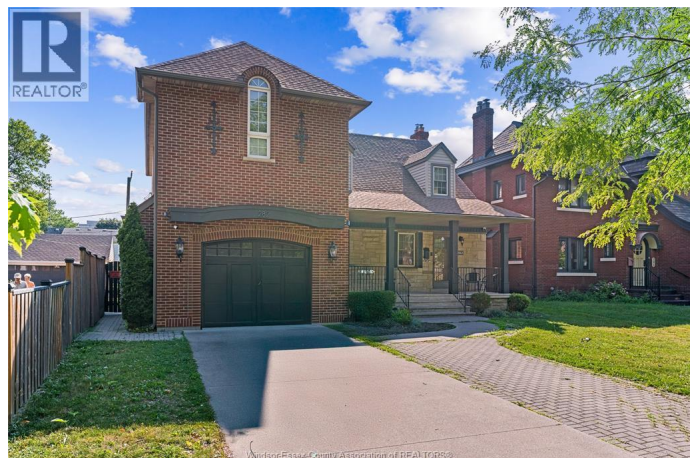
MLS® #25025717

\$1,400

1 Bedroom, 1.00 Bathroom,
Single Family

N/A, Windsor, Ontario

Located in the prestigious Riverside neighbourhood, this charming lower-level unit is part of a grand, character-filled 2-storey home that beautifully blends historic elegance with modern comfort. The unit features a spacious bedroom, an oversized kitchen, a massive living room, a full bathroom, and private in-suite laundry for added convenience. A front driveway offers easy parking, and the home's curb appeal is second to none. Just steps from Windsor's iconic waterfront, scenic parks, top-rated schools, and premier amenities—this home is also located within the highly sought-after Suzuki School District. Minimum 1-year lease. Credit check and employment verification required. Contact me today to book your private showing! (id:6289)



Essential Information

Listing #	25025717
Price	\$1,400
Bedrooms	1
Bathrooms	1.00
Type	Single Family
Sub-Type	Freehold

Community Information

Address	282 Rossini Unit# Lower
Subdivision	N/A
City	Windsor

Province	Ontario
Postal Code	N8N2Z1

Amenities

Features	Concrete Driveway, Finished Driveway, Front Driveway, Mutual Driveway
Has Pool	Yes
Pool	Inground pool

Interior

Appliances	Dishwasher, Dryer, Refrigerator, Stove, Washer
Heating	Natural gas Baseboard heaters, Forced air, Furnace
Cooling	Central air conditioning
# of Stories	2

Exterior

Exterior	Aluminum/Vinyl, Brick
Exterior Features	Landscaped
Foundation	Block

Listing Details

Listing Office	THE SIGNATURE GROUP REALTY INC
----------------	--------------------------------



The trademarks MLS®, Multiple Listing Service® and the associated logos are owned by The Canadian Real Estate Association (CREA) and identify the quality of services provided by real estate professionals who are members of CREA. REALTOR®. Member of CREA and more.

Listing information last updated on October 13th, 2025 at 1:16pm CDT