

\$929,000 - 500, 900 6 Avenue Sw, Calgary

MLS® #A1122334

\$929,000

0 Bedroom, 0.00 Bathroom, 5,612 sqft
Office

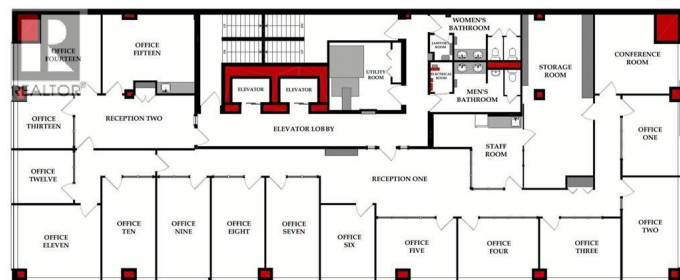
Downtown West End, Calgary, Alberta

Total 5th Floor In Edinburgh Place â€“ Great Possibilities! â€“ Location is So Important to Business and Its People. So advantageous, itâ€™s situated on the corner of 8th St & 6 Ave SW in the DT â€™s preferable west-end. Forget about cars & parking, the C-Train is a mere block away. The 5th floor encompasses approx. 5,600sqft. Served by two elevators, access is easy. The current layout incl. 14 offices, 2 meeting rooms [one with kitchenette], staff room with kitchen & storage. Having 2 entrances/reception areas supports division of operations if desired. Ample windows provide natural light & views. Two washrooms. Numerous eateries in area. Enjoy Century Gardens Pk. Steps to the Level 15 network & shopping. Stroll the Bow River pathway. Hop across the river to delightful Kensington. As the city moves forward, opportunity is knocking for this low priced, big sqft full floor condo. (id:6289)

Built in 1980

Essential Information

Listing #	A1122334
Price	\$929,000
Bathrooms	0.00
Square Footage	5,612
Year Built	1980
Type	Office
Sub-Type	Condominium/Strata



Community Information

Address	500, 900 6 Avenue Sw
Subdivision	Downtown West End
City	Calgary
Province	Alberta
Postal Code	T2P3K2

Exterior

Exterior	Brick, Concrete
Construction	Poured concrete

Listing Details

Listing Office	CIR Realty
----------------	------------



The trademarks MLS®, Multiple Listing Service® and the associated logos are owned by The Canadian Real Estate Association (CREA) and identify the quality of services provided by real estate professionals who are members of CREA. REALTOR®. Member of CREA and more.

Listing information last updated on October 13th, 2025 at 3:16am CDT