

\$499,000 - 205, 1111 Olympic Way Se, Calgary

MLS® #A2136739

\$499,000

0 Bedroom, 0.00 Bathroom, 2,164 sqft
Office

Beltline, Calgary, Alberta

Click brochure link for more details** Arriva is a 3-storey building containing 61,499 square feet of retail and office space. The property is located in Victoria Park, Calgary's up-and-coming events and culture district. It is surrounded by historic buildings, new restaurants and green spaces bordering the Elbow River. Arriva is directly across from the Stampede Grounds and the Scotiabank Saddledome. (id:6289)

Built in 2007

Essential Information

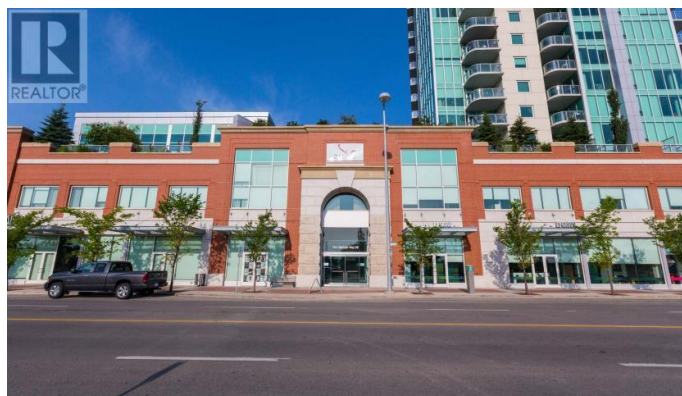
Listings #	A2136739
Price	\$499,000
Bathrooms	0.00
Square Footage	2,164
Year Built	2007
Type	Office
Sub-Type	Condominium/Strata

Community Information

Address	205, 1111 Olympic Way Se
Subdivision	Beltline
City	Calgary
Province	Alberta
Postal Code	T2G0L4

Listing Details

Listing Office Honestdoor Inc.



The trademarks MLS®, Multiple Listing Service® and the associated logos are owned by The Canadian Real Estate Association (CREA) and identify the quality of services provided by real estate professionals who are members of CREA. REALTOR®. Member of CREA and more.

Listing information last updated on October 13th, 2025 at 1:01am CDT