

\$249,900 - 232, 300 Marina Drive, Chestermere

MLS® #A2226807

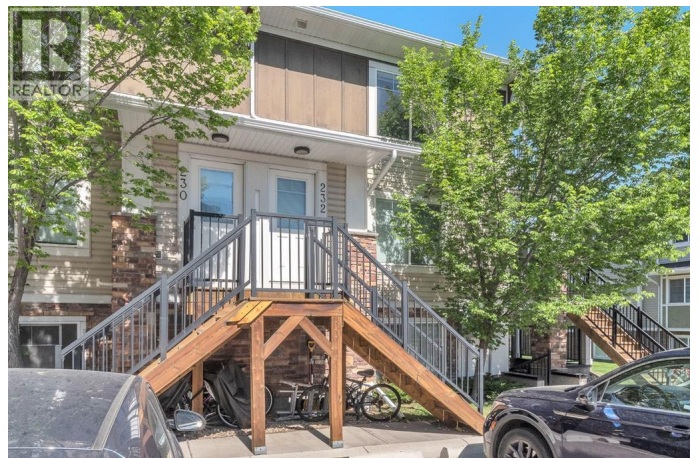
\$249,900

2 Bedroom, 1.00 Bathroom, 820 sqft

Single Family

Westmere, Chestermere, Alberta

Bright & Inviting 2 Bedroom Condo in the Heart of Chestermere – Steps from the Lake! Welcome to Chestermere Station, where location, convenience, and lifestyle come together! This well maintained top-floor unit offers 820 sq. ft. of smartly designed living space in one of Chestermere’s most desirable areas. Whether you’re a first time buyer, investor, or looking to downsize, this 2 bedroom, 1 bathroom condo is a fantastic opportunity. Step inside and you’ll immediately notice the open concept layout that seamlessly connects the kitchen, dining, and living areas, creating an ideal setup for everyday living and entertaining. Large south facing windows fill the space with natural light, giving it a warm and welcoming feel throughout the day. The kitchen is both functional and stylish, featuring full height cabinetry, ample counter space, and a complete appliance package perfect for whipping up meals or hosting friends. Just off the living room, a private balcony offers a great spot to relax with your morning coffee or enjoy evening sunsets. Both bedrooms are generously sized with good closet space, and the 4 piece bathroom is clean, modern, and easily accessible. You’ll also enjoy the convenience of in suite laundry, making everyday tasks that much easier. Residents of this professionally managed complex enjoy beautifully maintained common areas, landscaped green spaces, and a peaceful community atmosphere. Plus, you’re just a



short walk to Lake Chestermere, grocery stores, shops, restaurants, and more. Enjoy low condo fees, a top-floor location, and a move in ready home in an unbeatable setting. Donâ€™t miss your chance to own in this sought after development, schedule your private showing today! (id:6289)

Built in 2012

Essential Information

Listing #	A2226807
Price	\$249,900
Bedrooms	2
Bathrooms	1.00
Square Footage	820
Year Built	2012
Type	Single Family
Sub-Type	Condominium/Strata

Community Information

Address	232, 300 Marina Drive
Subdivision	Westmere
City	Chestermere
Province	Alberta
Postal Code	T1X0P6

Amenities

Amenities	Park, Playground, Schools, Shopping, Water Nearby
Features	Other, Parking
Parking Spaces	1

Interior

Appliances	Refrigerator, Dishwasher, Oven, Microwave, Microwave Range Hood Combo, Washer & Dryer
Heating	Natural gas Forced air
Cooling	None
# of Stories	3

Exterior

Construction	Wood frame
Foundation	Poured Concrete

Listing Details

Listing Office 2% Realty



The trademarks MLS®, Multiple Listing Service® and the associated logos are owned by The Canadian Real Estate Association (CREA) and identify the quality of services provided by real estate professionals who are members of CREA. REALTOR®. Member of CREA and more.

Listing information last updated on October 13th, 2025 at 4:46am CDT