

# \$499,000 - 55, 300 Marina Drive, Chestermere

MLS® #A2229633

**\$499,000**

4 Bedroom, 4.00 Bathroom, 2,132 sqft

Single Family

Westmere, Chestermere, Alberta

\*\*\*Welcome to the largest and most impressive unit in the community! Professionally measured at 2,130 sq ft, this townhouse offers approximately 400 sqft more living space than any other unit in the complex. Enjoy the added convenience of an attached double garage—an exceptional find in this sought-after neighborhood.\*\*\* (id:6289)

Built in 2014

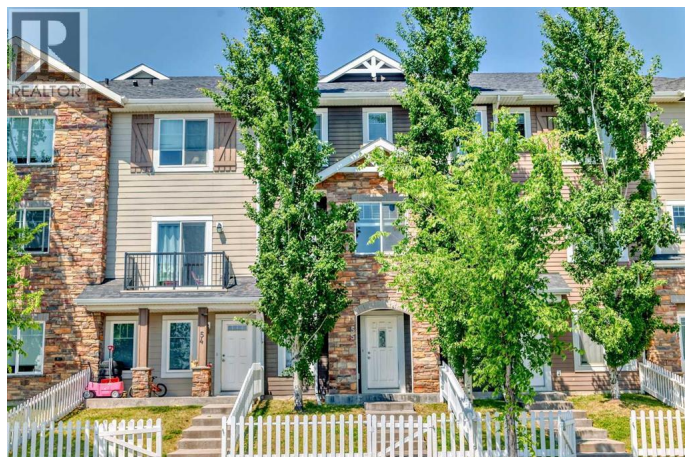
## Essential Information

Listing #	A2229633
Price	\$499,000
Bedrooms	4
Bathrooms	4.00
Half Baths	1
Square Footage	2,132
Year Built	2014
Type	Single Family
Sub-Type	Condominium/Strata

## Community Information

Address	55, 300 Marina Drive
Subdivision	Westmere
City	Chestermere
Province	Alberta
Postal Code	T1X0P6

## Amenities



Amenities	Golf Course, Park, Playground, Schools, Shopping, Water Nearby
Features	Back lane, No Animal Home, No Smoking Home, Parking
Parking Spaces	4
Parking	Attached Garage
# of Garages	2

## Interior

Appliances	Refrigerator, Dishwasher, Stove, Microwave, Window Coverings, Garage door opener, Washer/Dryer Stack-Up
Heating	Natural gas Forced air
Cooling	None
# of Stories	3

## Exterior

Exterior	Brick, Vinyl siding
Construction	Wood frame
Foundation	Poured Concrete

## Listing Details

Listing Office	Century 21 Bravo Realty
----------------	-------------------------



The trademarks MLS®, Multiple Listing Service® and the associated logos are owned by The Canadian Real Estate Association (CREA) and identify the quality of services provided by real estate professionals who are members of CREA. REALTOR®. Member of CREA and more.

Listing information last updated on October 13th, 2025 at 4:46am CDT