

# \$2,499,999 - 264201 Range Road 12 Sw, Airdrie

MLS® #A2232247

**\$2,499,999**

3 Bedroom, 4.00 Bathroom, 2,124 sqft

Single Family on 4.64 Acres

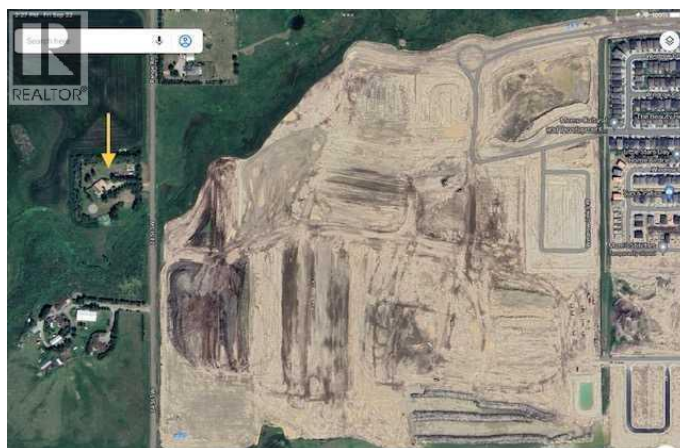
N/A, Airdrie, Alberta

Excellent investment 4.64 Acres located in the fast growing city of Airdrie. Property is designated residential in an approved Community Area Structure Plan (CASP). The city wants multi family on the property with potential TOWNHOMES , APARTMENTS or possible MIXED USE. Close proximity to future High School and Rec Center to be constructed east of the property on Mattamy owned lands. House has an office on Main as well den and porch room ( not included in the main floor area measurement) not heated. Basement fully developed with 2 BR's 3 piece bath storage and large open lounging area with bar. Qualico currently adjacent to the property with Mattamy directly east on 24 St. currently being rough graded. (id:6289)

Built in 1985

## Essential Information

Listing #	A2232247
Price	\$2,499,999
Bedrooms	3
Bathrooms	4.00
Half Baths	1
Square Footage	2,124
Acres	4.64
Year Built	1985
Type	Single Family
Sub-Type	Freehold



Style Bungalow

### Community Information

Address 264201 Range Road 12 Sw  
Subdivision N/A  
City Airdrie  
Province Alberta  
Postal Code T4B2Z8

### Amenities

Amenities Golf Course, Schools, Shopping  
Features See remarks  
Parking Spaces 8  
Parking Attached Garage  
# of Garages 2

### Interior

Appliances Refrigerator, Cooktop - Electric, Dishwasher, Oven, Microwave, Washer & Dryer  
Heating Natural gas Forced air  
Cooling None  
Fireplace Yes  
# of Fireplaces 1  
# of Stories 1  
Has Basement Yes

### Exterior

Exterior Wood siding  
Exterior Features Landscaped  
Foundation Poured Concrete

### Listing Details

Listing Office Royal LePage METRO



The trademarks MLS®, Multiple Listing Service® and the associated logos are owned by The Canadian Real Estate Association (CREA) and identify the quality of services provided by real estate professionals who are members of CREA. REALTOR®. Member of CREA and more.

Listing information last updated on October 14th, 2025 at 4:01am CDT