

\$639,900 - 402 Hillcrest Circle Sw, Airdrie

MLS® #A2237777

\$639,900

3 Bedroom, 3.00 Bathroom, 2,146 sqft

Single Family on 0.10 Acres

Hillcrest, Airdrie, Alberta

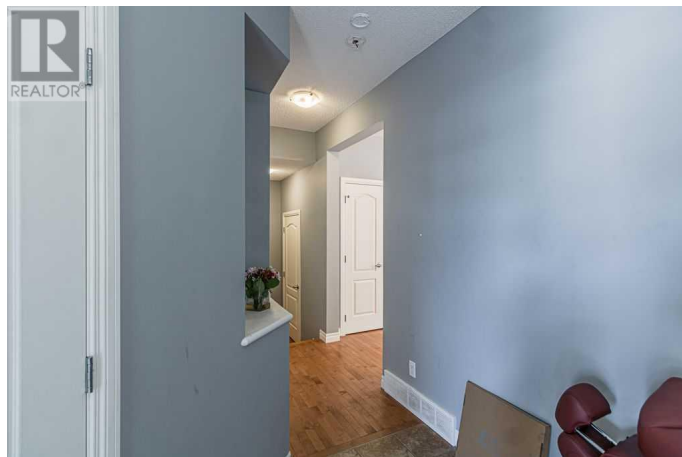
Welcome to this 3 Bedroom 2.5 bath home in amazing community of HILLCREST with 9ft ceiling on main floor consists an open floor plan. Main floor completes with open foyer/entrance, living room with fireplace, kitchen, Dining Area and a half bath. Patio door opens up to generous size south backyard. Upstairs you will find master bedroom with 3 windows for lots of natural light, spacious walk-in closet with window and a 5pc en-suite, Separate Laundry room, Huge bonus room (with tray ceiling), another 2 bedrooms and 4pc bathroom. This property is just few minutes of walk to Schools, Parks, Pond, Playground and Shopping and easy access to Hwy2 as well. (id:6289)

Built in 2014

Essential Information

Listing #	A2237777
Price	\$639,900
Bedrooms	3
Bathrooms	3.00
Half Baths	1
Square Footage	2,146
Acres	0.10
Year Built	2014
Type	Single Family
Sub-Type	Freehold

Community Information



Address	402 Hillcrest Circle Sw
Subdivision	Hillcrest
City	Airdrie
Province	Alberta
Postal Code	T4B4B3

Amenities

Amenities	Park, Playground, Schools, Shopping
Parking Spaces	4
Parking	Attached Garage
# of Garages	2

Interior

Appliances	Washer, Refrigerator, Dishwasher, Stove, Dryer, Microwave Range Hood Combo, Garage door opener
Heating	Natural gas Forced air
Cooling	None
Fireplace	Yes
# of Fireplaces	1
# of Stories	2

Exterior

Exterior	Vinyl siding
Construction	Wood frame
Foundation	Poured Concrete

Listing Details

Listing Office	TREC The Real Estate Company
----------------	------------------------------



The trademarks MLS®, Multiple Listing Service® and the associated logos are owned by The Canadian Real Estate Association (CREA) and identify the quality of services provided by real estate professionals who are members of CREA. REALTOR®. Member of CREA and more.

Listing information last updated on October 13th, 2025 at 4:03pm CDT