

# \$199,000 - 302, 638 Meredith Road Ne, Calgary

MLS® #A2240861

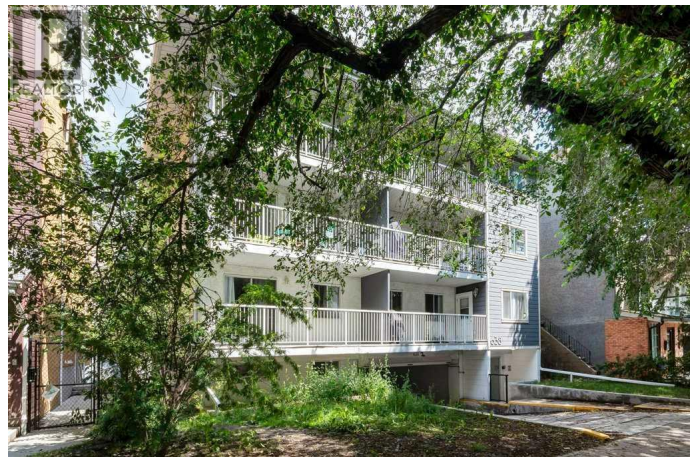
**\$199,000**

2 Bedroom, 1.00 Bathroom, 828 sqft

Single Family

Bridgeland/Riverside, Calgary, Alberta

Welcome to the heart of Bridgeland! This top-floor 2-bedroom condo with an assigned parking spot offers the perfect balance of comfort, convenience, and charm. The open-concept layout features a functional kitchen with a breakfast bar and ample cabinetry, opening into a bright and spacious living room with plenty of room to relax or entertain. Both bedrooms are generously sized, with mirrored closets and built-in organizers to maximize storage. One includes elegant French doors that add architectural interest while still functioning perfectly as a full second bedroom, whether for guests, family, or a roommate. The 4-piece bathroom includes a deep soaking tub for relaxing evenings at home. Enjoy the ease of in-suite laundry, and take in the view from your oversized, covered balcony (perfect for lounging or entertaining!). Living in Bridgeland means being part of one of Calgary's most vibrant inner-city communities. Known for its tree-lined streets, friendly atmosphere, and walkability, Bridgeland offers an eclectic mix of local cafes, restaurants, and boutique shops. Many of which are just minutes from your front door. You're also just steps away from the Bow River pathway system, ideal for cycling or morning jogs, and within walking distance to the C-Train. You also have easy access to Memorial Drive and downtown. Whether you're heading out for an espresso at a neighborhood café or catching a game in the city core, this location connects you to it all. Don't miss



this opportunity to live in one of Calgary's™  
most vibrant, walkable communities; book your  
showing today! (id:6289)

Built in 1978

**Essential Information**

Listing #	A2240861
Price	\$199,000
Bedrooms	2
Bathrooms	1.00
Square Footage	828
Year Built	1978
Type	Single Family
Sub-Type	Condominium/Strata

**Community Information**

Address	302, 638 Meredith Road Ne
Subdivision	Bridgeland/Riverside
City	Calgary
Province	Alberta
Postal Code	T2E5A8

**Amenities**

Amenities	Park, Schools, Shopping
Features	French door, Closet Organizers, Parking
Parking Spaces	1
Parking	Covered

**Interior**

Appliances	Refrigerator, Dishwasher, Stove, Washer & Dryer
Heating	Baseboard heaters
Cooling	None
# of Stories	4

**Exterior**

Exterior	Stucco
Construction	Wood frame

**Listing Details**

Listing Office

Coldwell Banker Mountain Central



The trademarks MLS®, Multiple Listing Service® and the associated logos are owned by The Canadian Real Estate Association (CREA) and identify the quality of services provided by real estate professionals who are members of CREA. REALTOR®. Member of CREA and more.

Listing information last updated on October 15th, 2025 at 6:31am CDT