

# \$599,000 - 185 Westchester Way, Chestermere

MLS® #A2241121

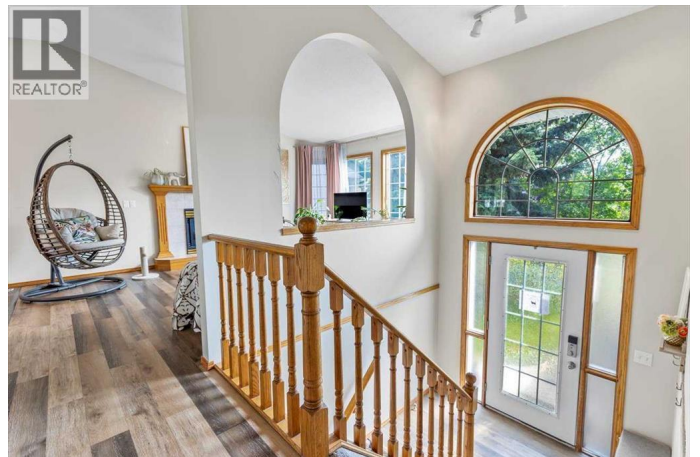
**\$599,000**

5 Bedroom, 3.00 Bathroom, 1,395 sqft

Single Family on 0.16 Acres

Chesterview Estates, Chestermere, Alberta

Discover this EXCEPTIONAL 5 BEDROOM, 3-BATHROOM BI-LEVEL HOME nestled in the desirable Chesterview Estates, offering over 2,650 SQUARE FEET OF DEVELOPED LIVING SPACE. Perfectly situated just a short stroll to the serene lake, this property combines comfort, functionality, and a prime location. **\*\*Main Level Highlights:\*\*** - Bright and inviting kitchen featuring GRANITE COUNTERTOPS, PLENTY OF CUPBOARD SPACE, STAINLESS STEEL APPLIANCES, a versatile moveable island, and GENEROUS DINING SPACE – ideal for family meals and entertaining. - VAULTED CEILINGS, BRIGHT SUNNY LIVING ROOM with LARGE WINDOWS that flood the space with natural light, creating a warm and welcoming atmosphere. - Spacious master bedroom with a walk-in closet and a luxurious ensuite boasting a jetted soaker tub and a separate shower enclosure. **\*\*FULLY FINISHED BASEMENT:\*\*** - Perfect for family gatherings and entertaining, with a large family room, two additional bedrooms (4 & 5), a full bathroom, a versatile den, and a convenient wet bar. - Separate private entry through the garage provides easy access and additional privacy. **\*\*Outdoor Living & Location:\*\*** - Backing onto a peaceful pathway, the LARGE DECK and WEST FACING BACKYARD are perfect for summer barbecues, relaxing evenings, and outdoor entertaining. - Close proximity to parks, pathways, schools, and a variety of amenities, making this an ideal family home in a



sought-after estate area.This rare find combines spacious living, thoughtful design, and a fantastic location â€” donâ€™t miss your chance to make this beautiful home yours! \*\*SCHEDULE YOUR VIEWING TODAY!\*\* (id:6289)

Built in 1994

**Essential Information**

Listing #	A2241121
Price	\$599,000
Bedrooms	5
Bathrooms	3.00
Square Footage	1,395
Acres	0.16
Year Built	1994
Type	Single Family
Sub-Type	Freehold
Style	Bi-level

**Community Information**

Address	185 Westchester Way
Subdivision	Chesterview Estates
City	Chestermere
Province	Alberta
Postal Code	T1X1B8

**Amenities**

Amenities	Park, Playground, Schools, Shopping, Water Nearby
Features	Level
Parking Spaces	4
Parking	Attached Garage
# of Garages	2

**Interior**

Appliances	Washer, Refrigerator, Range - Electric, Dishwasher, Dryer, Hood Fan, Window Coverings, Garage door opener
Heating	Forced air

Cooling	None
Fireplace	Yes
# of Fireplaces	1
Has Basement	Yes

## Exterior

Exterior	Vinyl siding
Construction	Wood frame
Foundation	Poured Concrete

## Listing Details

Listing Office      CIR Realty



The trademarks MLS®, Multiple Listing Service® and the associated logos are owned by The Canadian Real Estate Association (CREA) and identify the quality of services provided by real estate professionals who are members of CREA. REALTOR®. Member of CREA and more.

Listing information last updated on October 13th, 2025 at 4:46am CDT