

\$590,000 - 31 Belgian Court, Cochrane

MLS® #A2243439

\$590,000

3 Bedroom, 3.00 Bathroom, 1,868 sqft

Single Family on 0.08 Acres

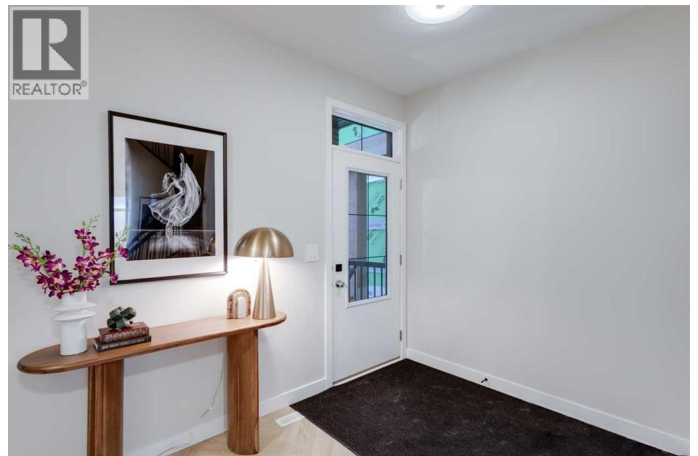
Heartland, Cochrane, Alberta

****\$20K off list price - special promo price -
Open House at Showhome - 15 Belgian Court,
Cochrane - October 11th 12-4pm, October
12th 12-2pm and October 13th 1-4pm ****

Welcome to The Willow by Rohit! This stunning home offers an open-concept living space designed for modern living. The spacious living room that seamlessly flows into the kitchen and dining areaâ€”perfect for entertaining or everyday family life. The kitchen features a walk-through pantry for easy access and additional storage. The double attached garage provides convenience and direct entry into the home through the mudroom. Upstairs, you'll find the luxurious primary bedroom, offering a peaceful retreat. Just down the hall, thereâ€™s a versatile office space, ideal for working from home. The upper floor also includes a spacious laundry room, plus two additional bedrooms, perfect for family or guests. The unfinished basement presents an excellent opportunity to customize the space to your liking, whether you envision a home gym, theater room, or additional living area. Experience the perfect blend of style, function, and comfort in The Willowâ€”your new dream home! Photos are representative from a previous build, some features may be different. (id:6289)

Built in 2025

Essential Information



Listing #	A2243439
Price	\$590,000
Bedrooms	3
Bathrooms	3.00
Half Baths	1
Square Footage	1,868
Acres	0.08
Year Built	2025
Type	Single Family
Sub-Type	Freehold

Community Information

Address	31 Belgian Court
Subdivision	Heartland
City	Cochrane
Province	Alberta
Postal Code	T4C3H5

Amenities

Amenities	Schools, Shopping
Features	Other, Closet Organizers, No Animal Home, No Smoking Home
Parking Spaces	2
Parking	Attached Garage
# of Garages	2

Interior

Appliances	Washer, Refrigerator, Dishwasher, Stove, Dryer, Microwave
Heating	Forced air
Cooling	None
# of Stories	2
Basement	Separate entrance

Exterior

Construction	Wood frame
Foundation	Poured Concrete

Listing Details

Listing Office	eXp Realty
----------------	------------



The trademarks MLS®, Multiple Listing Service® and the associated logos are owned by The Canadian Real Estate Association (CREA) and identify the quality of services provided by real estate professionals who are members of CREA. REALTOR®. Member of CREA and more.

Listing information last updated on October 13th, 2025 at 3:31am CDT