

# \$744,900 - 110 Waterford Road, Chestermere

MLS® #A2245558

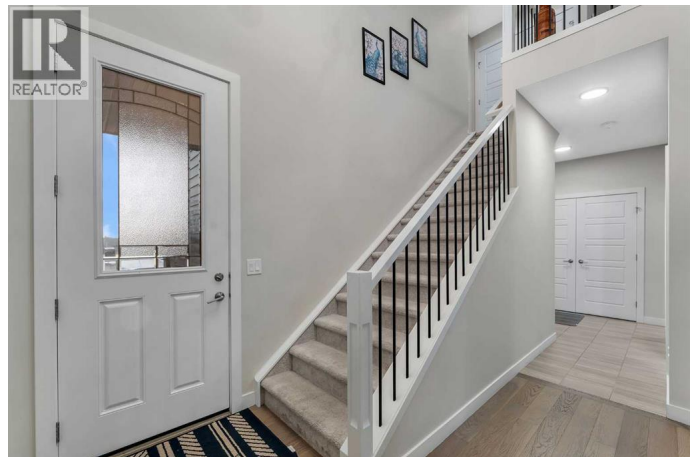
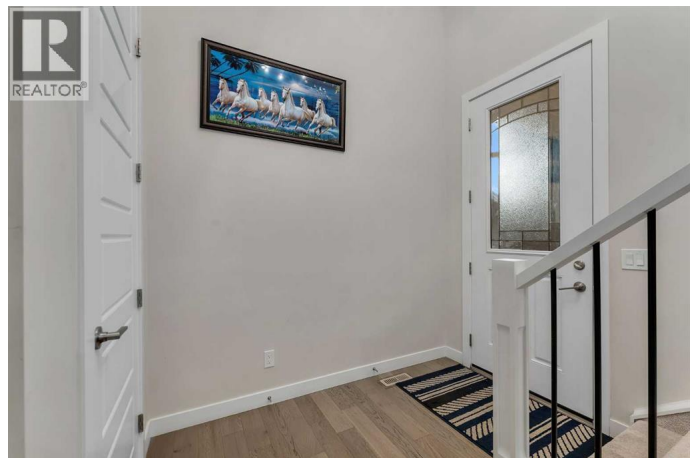
**\$744,900**

3 Bedroom, 3.00 Bathroom, 1,911 sqft

Single Family on 0.13 Acres

Waterford, Chestermere, Alberta

TRIPLE CAR GARAGE | GREEN SPACE | LAKESIDE LIVING | HARDWOOD FLOORS | HARDIE BOARD EXTERIOR | Welcome to your dream home in the sought-after community of Waterford, Chestermere! This beautifully upgraded home offers the perfect blend of functionality, style, and comfort – complete with a rare triple car garage featuring soaring high ceilings, ideal for car lovers, extra storage, or even a workshop. Backed by lush greenspace and flooded with natural light, this home invites you in through a spacious foyer adorned with elegant wrought iron railings and a custom built-in bench – the perfect spot to welcome guests or settle in after a long day. The heart of the home features a cozy living room with tiled accents and a striking fireplace, ideal for family movie nights or quiet evenings in. The chef-inspired kitchen boasts an abundance of cabinetry, a generous pantry, stainless steel appliances, and a stunning quartz island that invites conversations over coffee or weekend baking with loved ones. Just off the kitchen is the bright and airy dining room, framed by a large window that overlooks the sun-soaked backyard – perfect for summer BBQs, kids playing, or unwinding with a glass of wine. This floor is further completed by a 2 piece bathroom for added convenience. Conveniently located off the kitchen, the mudroom keeps life organized with direct access to the spacious triple garage. Upstairs, discover a thoughtfully designed layout featuring three bedrooms, including a massive



primary retreat with a luxurious 5-piece ensuite and a generous walk-in closet. A 4-piece bathroom and dedicated laundry room add everyday ease. The open-to-below concept adds a dramatic, airy feel throughout the home, letting light flow effortlessly from floor to floor. The unfinished basement offers endless potential – whether you envision a home theatre, gym, or extra bedrooms, the space is yours to create. Located just minutes from the lake, scenic walking paths, playgrounds, and nearby shopping plazas, and with quick access to 17 Ave and Stoney Trail, this home is perfectly positioned for both tranquility and convenience. Don't miss your chance to make this stunning property your forever home. Book your private showing today! (id:6289)

Built in 2022

**Essential Information**

Listing #	A2245558
Price	\$744,900
Bedrooms	3
Bathrooms	3.00
Half Baths	1
Square Footage	1,911
Acres	0.13
Year Built	2022
Type	Single Family
Sub-Type	Freehold

**Community Information**

Address	110 Waterford Road
Subdivision	Waterford
City	Chestermere
Province	Alberta
Postal Code	T1X2P6

**Amenities**

Amenities	Park, Playground, Schools, Shopping
Features	See remarks, PVC window, Closet Organizers, No Animal Home, No Smoking Home
Parking Spaces	6
Parking	Attached Garage, Covered, Street
# of Garages	3

### Interior

Appliances	Refrigerator, Gas stove(s), Dishwasher, Microwave Range Hood Combo, Washer & Dryer
Heating	Forced air
Cooling	None
Fireplace	Yes
# of Fireplaces	1
# of Stories	2

### Exterior

Exterior	Composite Siding
Exterior Features	Landscaped
Construction	Wood frame
Foundation	Poured Concrete

### Listing Details

Listing Office      Real Broker



The trademarks MLS®, Multiple Listing Service® and the associated logos are owned by The Canadian Real Estate Association (CREA) and identify the quality of services provided by real estate professionals who are members of CREA. REALTOR®. Member of CREA and more.

Listing information last updated on October 13th, 2025 at 3:31am CDT