

# \$589,000 - 136 Chelsea Drive, Chestermere

MLS® #A2245570

**\$589,000**

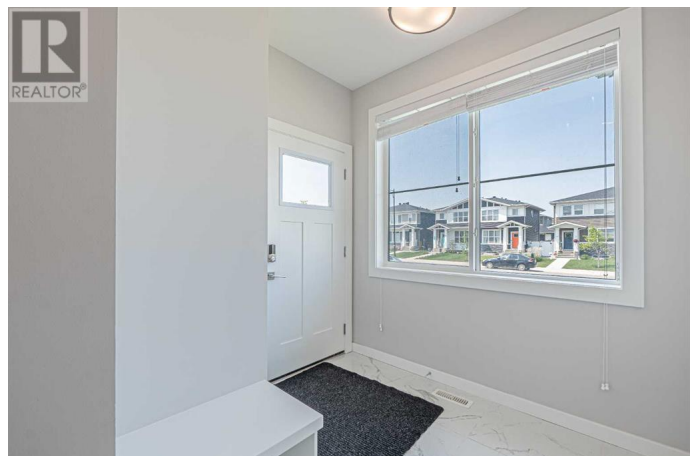
3 Bedroom, 3.00 Bathroom, 1,683 sqft  
Single Family on 0.07 Acres

Chelsea, Chestermere, Alberta

Modern & Stylish 2022-Built Home with Covered Deck and Oversized Garage This beautifully crafted home offers approximately 1,700 sq. ft. of living space on a 2,900 sq. ft. lot, combining comfort, style, and convenience. Built in 2022, this residence is perfect for families seeking modern finishes and functional design. The main floor features an open-concept layout with a spacious living and dining area, a stunning kitchen with quartz countertops, gas range, dual sink with a window, ample cabinetry, and a walk-in pantry. A custom-built bar adds a unique touch for entertaining. A half bathroom completes the main level. The upper level offers 3 bedrooms and 2 full bathrooms, including a luxurious primary suite with a 5-piece ensuite finished in ceramic tile. Two additional bedrooms share a modern full bathroom, also with elegant ceramic tiling. At the rear of the home, enjoy a huge covered deck, zero-maintenance backyard, and an oversized detached garage with convenient back alley access—perfect for extra storage or parking. Located just minutes from major amenities including Walmart, Costco, Cineplex, Chestermere Lake, schools, and green spaces, this home offers the ideal blend of suburban comfort and urban convenience. (id:6289)

Built in 2022

## Essential Information



Listing #	A2245570
Price	\$589,000
Bedrooms	3
Bathrooms	3.00
Half Baths	1
Square Footage	1,683
Acres	0.07
Year Built	2022
Type	Single Family
Sub-Type	Freehold

### Community Information

Address	136 Chelsea Drive
Subdivision	Chelsea
City	Chestermere
Province	Alberta
Postal Code	T1X1Z3

### Amenities

Amenities	Playground, Shopping
Features	Back lane, Level, Gazebo
Parking Spaces	2
Parking	Detached Garage, Oversize
# of Garages	2

### Interior

Appliances	Refrigerator, Range - Gas, Dishwasher, Microwave Range Hood Combo, Window Coverings, Washer & Dryer
Heating	Forced air
Cooling	None
# of Stories	2
Basement	Separate entrance

### Exterior

Exterior	Concrete, Vinyl siding
Construction	Poured concrete, Wood frame
Foundation	Poured Concrete

### Listing Details

Listing Office

eXp Realty



The trademarks MLS®, Multiple Listing Service® and the associated logos are owned by The Canadian Real Estate Association (CREA) and identify the quality of services provided by real estate professionals who are members of CREA. REALTOR®. Member of CREA and more.

Listing information last updated on October 13th, 2025 at 3:16am CDT