

# \$1,050,000 - 351 Waterford Grove, Chestermere

MLS® #A2247469

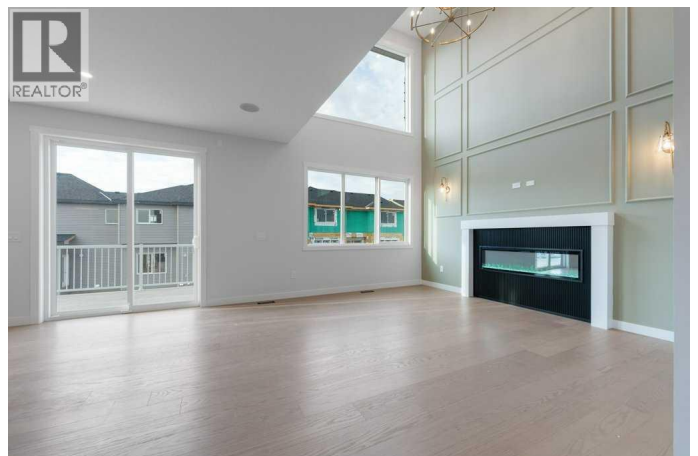
**\$1,050,000**

5 Bedroom, 4.00 Bathroom, 3,126 sqft

Single Family on 0.12 Acres

N/A, Chestermere, Alberta

This remarkable semi-estate property offers an exceptional blend of luxury, space, and functionality, designed to impress from the moment you arrive. Situated on a conventional lot, the home boasts a triple car garage and features 9-foot ceilings on all three levels, enhancing the sense of openness and sophistication throughout. As you step inside, you're greeted by a dramatic open-to-below foyer with custom feature walls that set the tone for the elegance found across the home. The main floor is thoughtfully designed with a full bedroom and full bathroom, perfect for guests or multi-generational living. A large living area centers around a beautiful gas fireplace with built-in features, while a spice kitchen adds functionality and convenience. The heart of the home is the gourmet kitchen, complete with built-in appliances and a massive island – an ideal space for entertaining and culinary creativity. Upstairs, you'll find two spacious primary bedrooms. The main primary suite offers a luxurious 6-piece ensuite and a generous walk-in closet, while the second primary features its own elegant 5-piece ensuite. Two additional bedrooms share a third bathroom and are complemented by a huge bonus area, perfect for a media room or play space. A conveniently located laundry room completes the upper floor. The walkout basement is filled with natural light, thanks to oversized windows, and presents endless opportunities for future development – whether you're envisioning a



huge recreational area, home gym, or entertainment area. With its thoughtful layout, upscale finishes, and room to grow, this home truly offers a lot to explore and even more to love. (id:6289)

Built in 2025

**Essential Information**

Listing #	A2247469
Price	\$1,050,000
Bedrooms	5
Bathrooms	4.00
Square Footage	3,126
Acres	0.12
Year Built	2025
Type	Single Family
Sub-Type	Freehold

**Community Information**

Address	351 Waterford Grove
Subdivision	N/A
City	Chestermere
Province	Alberta
Postal Code	T1X2T9

**Amenities**

Amenities	Park, Playground, Shopping
Features	PVC window, French door, Closet Organizers, No Animal Home, No Smoking Home
Parking Spaces	6
Parking	Attached Garage, Other
# of Garages	3

**Interior**

Appliances	Washer, Refrigerator, Cooktop - Electric, Gas stove(s), Dishwasher, Stove, Dryer, Microwave, Hood Fan, Garage door opener
Heating	Forced air
Cooling	None

Fireplace	Yes
# of Fireplaces	1
# of Stories	2
Basement	Walk out

## Exterior

Exterior	Stone, Vinyl siding
Construction	Wood frame
Foundation	Poured Concrete

## Listing Details

Listing Office      PREP Realty



The trademarks MLS®, Multiple Listing Service® and the associated logos are owned by The Canadian Real Estate Association (CREA) and identify the quality of services provided by real estate professionals who are members of CREA. REALTOR®. Member of CREA and more.

Listing information last updated on October 13th, 2025 at 1:16pm CDT