

\$739,900 - 22 Glenhill Drive, Cochrane

MLS® #A2249567

\$739,900

3 Bedroom, 3.00 Bathroom, 1,318 sqft

Single Family on 0.13 Acres

Glenbow, Cochrane, Alberta

OPEN HOUSE SATURDAY 12-3:00 !!!

Possibly the best location in town! This lovely family home backs onto Big Hill Creek park and the back yard is well treed and private with a relaxing view of the treed creek side park. The apples are ready for picking! Granny smith(?), crabapples and raspberry!! Your huge deck overlooks the babbling brook and park view! There is a sheltered access to the legal basement suite. The attached double front drive garage has an extra long driveway for comfortable parking. You must see the condition and beauty of this exceptional home! Make it yours! (check out the video) (id:6289)

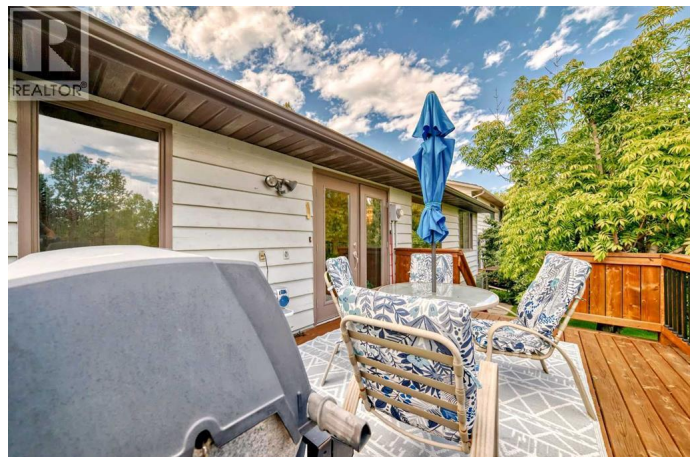
Built in 1980

Essential Information

Listing #	A2249567
Price	\$739,900
Bedrooms	3
Bathrooms	3.00
Square Footage	1,318
Acres	0.13
Year Built	1980
Type	Single Family
Sub-Type	Freehold
Style	Bi-level

Community Information

Address 22 Glenhill Drive



Subdivision	Glenbow
City	Cochrane
Province	Alberta
Postal Code	T4C1G8

Amenities

Amenities	Park, Playground, Recreation Nearby, Schools
Features	No neighbours behind
Parking Spaces	6
Parking	Attached Garage, See Remarks
# of Garages	2

Interior

Appliances	Refrigerator, Range - Electric, Dishwasher, Stove, Washer/Dryer Stack-Up
Heating	Natural gas Forced air
Cooling	None
Fireplace	Yes
# of Fireplaces	1
# of Stories	1
Has Basement	Yes
Basement	Walk-up, Suite

Exterior

Exterior Features	Fruit trees, Landscaped
Construction	Wood frame
Foundation	Poured Concrete

Listing Details

Listing Office	First Place Realty
----------------	--------------------



The trademarks MLS®, Multiple Listing Service® and the associated logos are owned by The Canadian Real Estate Association (CREA) and identify the quality of services provided by real estate professionals who are members of CREA. REALTOR®. Member of CREA and more.

Listing information last updated on October 13th, 2025 at 1:31pm CDT