

# \$389,000 - 898 Birch Street, Beaverlodge

MLS® #A2252098

**\$389,000**

3 Bedroom, 3.00 Bathroom, 1,148 sqft

Single Family on 0.20 Acres

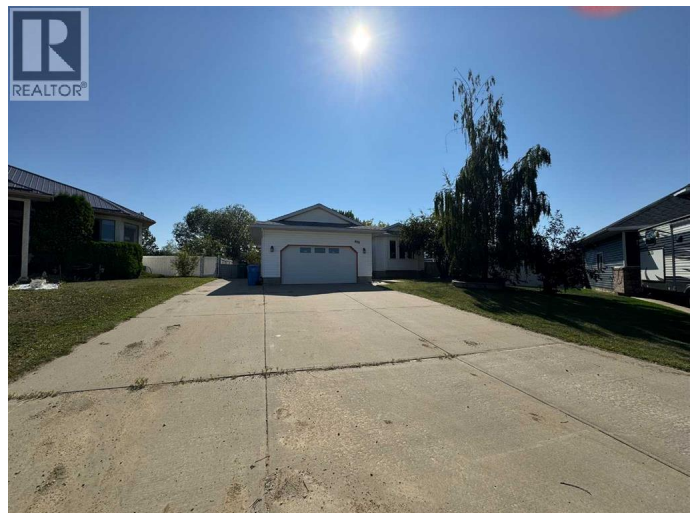
N/A, Beaverlodge, Alberta

Location, location, location! This classic bungalow home is on a mature pie shaped lot on beautiful Birch Street. Many features make this home a wonderful opportunity for any buyer. FRESH Paint throughout - Main floor Laundry - 3 Bedrooms Upstairs - 3 Full Bathrooms - 90% developed Basement - Lots of Storage- 2 new Exterior Doors - New Washer & Dryer - New Dishwasher - Heated Garage - Garden Shed - Concrete RV Parking - Some new Lighting & Windows - Shingles done in 2014 - HWT tank 2017 - Mature Trees - Low maintenance landscaping - 22 x 16 ft Deck - Backs onto Easement - Steps away from Park - Quiet Street . This is the perfect place in Beaverlodge to call Home; call a Realtor today! (id:6289)

Built in 1994

## Essential Information

Listing #	A2252098
Price	\$389,000
Bedrooms	3
Bathrooms	3.00
Square Footage	1,148
Acres	0.20
Year Built	1994
Type	Single Family
Sub-Type	Freehold
Style	Bungalow



## Community Information

Address	898 Birch Street
Subdivision	N/A
City	Beaverlodge
Province	Alberta
Postal Code	T0H0C0

## Amenities

Amenities	Playground, Recreation Nearby, Schools, Shopping
Features	See remarks
Parking Spaces	4
Parking	Attached Garage, Concrete, RV
# of Garages	2

## Interior

Appliances	Washer, Refrigerator, Dishwasher, Stove, Dryer, Microwave, Freezer
Heating	Natural gas Forced air
Cooling	None
# of Stories	1
Has Basement	Yes

## Exterior

Exterior	Vinyl siding
Foundation	Poured Concrete

## Listing Details

Listing Office	All Peace Realty Ltd.
----------------	-----------------------



The trademarks MLS®, Multiple Listing Service® and the associated logos are owned by The Canadian Real Estate Association (CREA) and identify the quality of services provided by real estate professionals who are members of CREA. REALTOR®. Member of CREA and more.

Listing information last updated on October 12th, 2025 at 9:31pm CDT