

\$610,000 - 641 Southwinds Close Sw, Airdrie

MLS® #A2253883

\$610,000

3 Bedroom, 3.00 Bathroom, 1,638 sqft
Single Family on 0.07 Acres

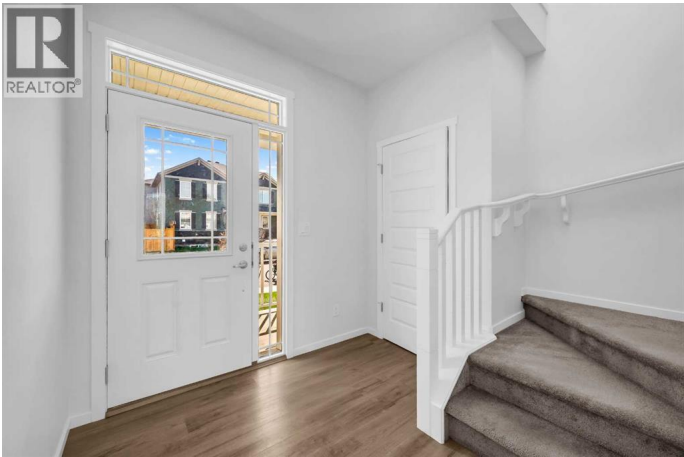
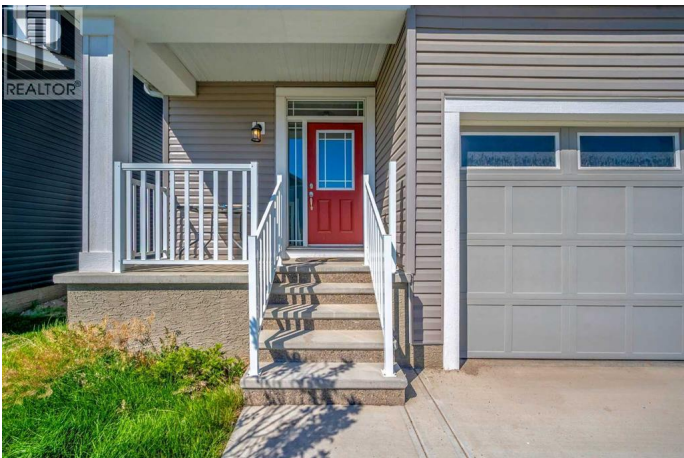
Southwinds, Airdrie, Alberta

Welcome to this charming detached home in the heart of Airdrie, perfectly situated backing onto a serene park – an ideal setting for family living! This 3-bedroom, 2.5-bathroom home offers a bright and functional layout with plenty of space for both relaxation and entertaining. The modern kitchen flows seamlessly into the dining and living areas, making it perfect for gatherings. Upstairs you’ll find three spacious bedrooms, including a primary retreat with a private ensuite. The double attached garage provides convenience and storage, while the unfinished basement with a separate entry awaits your personal touch! With a family-friendly location, beautiful park views, and endless potential, this home is ready to welcome its next chapter! (id:6289)

Built in 2023

Essential Information

Listing #	A2253883
Price	\$610,000
Bedrooms	3
Bathrooms	3.00
Half Baths	1
Square Footage	1,638
Acres	0.07
Year Built	2023
Type	Single Family



Sub-Type Freehold

Community Information

Address 641 Southwinds Close Sw
Subdivision Southwinds
City Airdrie
Province Alberta
Postal Code T4B5L5

Amenities

Amenities Park, Schools, Shopping
Features No Animal Home, No Smoking Home
Parking Spaces 2
Parking Attached Garage
of Garages 2

Interior

Appliances Refrigerator, Gas stove(s), Dishwasher, Window Coverings, Garage door opener, Washer/Dryer Stack-Up
Heating Forced air
Cooling None
Fireplace Yes
of Fireplaces 1
of Stories 2
Basement Separate entrance

Exterior

Exterior Vinyl siding
Construction Wood frame
Foundation Poured Concrete

Listing Details

Listing Office RE/MAX House of Real Estate



The trademarks MLS®, Multiple Listing Service® and the associated logos are owned by The Canadian Real Estate Association (CREA) and identify the quality of services provided by real estate professionals who are members of CREA. REALTOR®. Member of CREA and more.

Listing information last updated on October 14th, 2025 at 1:16am CDT