

\$514,900 - 351 Fireside Drive, Cochrane

MLS® #A2254442

\$514,900

3 Bedroom, 3.00 Bathroom, 1,528 sqft

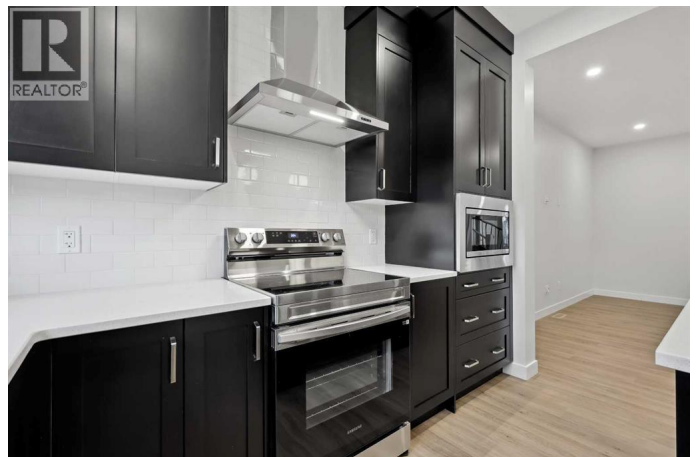
Single Family on 0.06 Acres

Fireside, Cochrane, Alberta

Welcome to the Luna model in Cochrane's Fireside community, offering 1,528 sq. ft. with 3 bedrooms and 2.5 bathrooms. The main floor is designed with an open layout that connects the great room, dining area, and kitchen. In the kitchen you'll find quartz countertops, Chantilly Lace shaker cabinetry, a Blanco Silgranit sink in Truffle, Boardwalk matte white backsplash, and a Mistral island that provides both workspace and seating. Upstairs, the primary bedroom includes a walk-in closet and ensuite. Two additional bedrooms, a full bathroom, and upper-level laundry complete this floor. Interior finishes include maple-stained railing with nickel spindles, Cozy White luxury vinyl plank, Off Shore carpet, and Micabella LVT. This home includes a side entry with basement rough-ins, a 9' foundation, and gas lines to the range and BBQ. A gravel parking pad is also included. Fireside is a well-established Cochrane community with two schools, nearby shops and services, playgrounds, and an extensive pathway system. It also offers quick access to Highway 22 for commuting into Calgary or exploring the mountains. Photos are representative, colours and finishes may vary. *Area size was calculated by applying the RMS to the blueprints provided by the builder. (id:6289)

Built in 2025

Essential Information



Listing #	A2254442
Price	\$514,900
Bedrooms	3
Bathrooms	3.00
Half Baths	1
Square Footage	1,528
Acres	0.06
Year Built	2025
Type	Single Family
Sub-Type	Freehold

Community Information

Address	351 Fireside Drive
Subdivision	Fireside
City	Cochrane
Province	Alberta
Postal Code	T4C3J1

Amenities

Amenities	Park, Playground, Schools, Shopping
Features	Back lane, No Animal Home, No Smoking Home, Gas BBQ Hookup, Parking
Parking Spaces	2
Parking	Parking Pad

Interior

Appliances	Refrigerator, Dishwasher, Stove, Microwave, Hood Fan
Heating	Forced air
Cooling	None
Fireplace	Yes
# of Fireplaces	1
# of Stories	2
Basement	Separate entrance

Exterior

Exterior	Vinyl siding
Construction	Wood frame
Foundation	Poured Concrete

Listing Details

Listing Office

LPT Realty



The trademarks MLS®, Multiple Listing Service® and the associated logos are owned by The Canadian Real Estate Association (CREA) and identify the quality of services provided by real estate professionals who are members of CREA. REALTOR®. Member of CREA and more.

Listing information last updated on October 13th, 2025 at 7:01am CDT