

# \$479,900 - 356 Waterford Boulevard, Chestermere

MLS® #A2255575

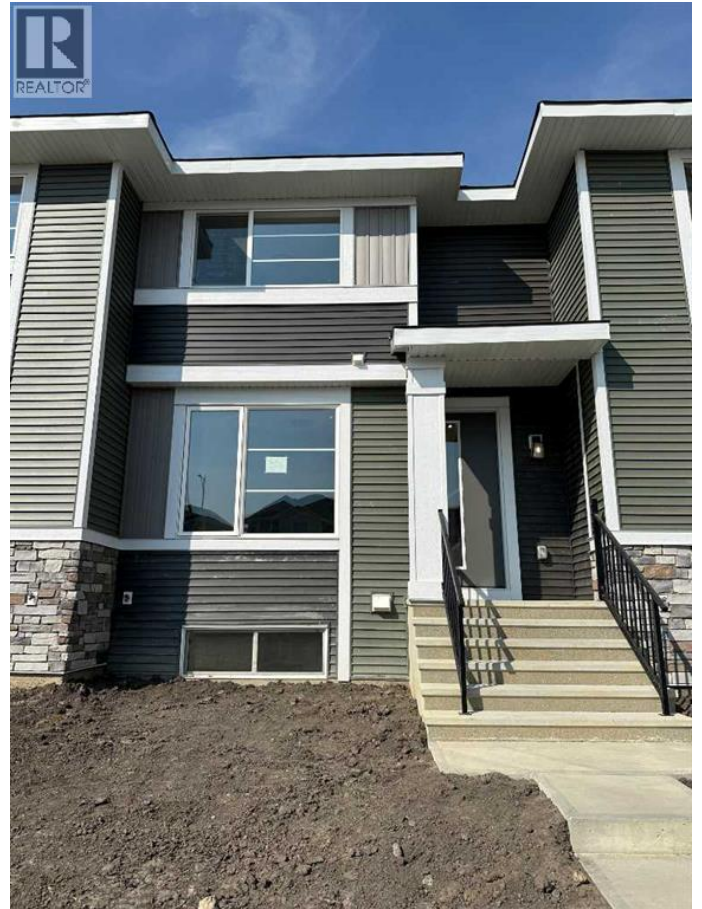
**\$479,900**

3 Bedroom, 3.00 Bathroom, 1,214 sqft

Single Family on 0.05 Acres

Waterford, Chestermere, Alberta

Welcome to the Troon Model by Douglas Homes, located in the desirable community of Waterford, Chestermere. This stylish home offers a modern open-concept main floor with 8' doors, creating a bright and spacious feel throughout. The upgraded kitchen is the heart of the home, designed for both function and entertaining, and is complemented by a convenient half bath on the main level. Upstairs, you'll find 3 generous bedrooms and 2 full bathrooms, including a private primary suite with walk-in closet and ensuite, plus a thoughtfully placed laundry area. The unfinished basement offers endless potential to design the space to your needs. Outside, enjoy the convenience of a detached double car garage and treated wood deck, with the home set in a growing community close to parks, schools, pathways, and just minutes to Chestermere Lake. This is the perfect opportunity to own a modern, move-in-ready home with all the features today's buyers are looking for! \*\*\*Unlock Your First Home with the GST Rebate! The First-Time Home Buyers' GST Rebate could save you up to \$50,000 on a new home! You must be 18+, a Canadian citizen or permanent resident, and haven't owned or lived in a home you or your spouse/common-law partner owned in the last four years. This is a LIMITED-TIME opportunity! Homes placed under contract after May 27, 2025 are eligible, Terms and conditions are subject to the Government of Canada/CRA rules and



guidelines. \*\*\* Don't miss your opportunity to own this beautiful, move-in-ready home built with quality and care. (id:6289)

Built in 2025

**Essential Information**

Listing #	A2255575
Price	\$479,900
Bedrooms	3
Bathrooms	3.00
Half Baths	1
Square Footage	1,214
Acres	0.05
Year Built	2025
Type	Single Family
Sub-Type	Freehold



**Community Information**

Address	356 Waterford Boulevard
Subdivision	Waterford
City	Chestermere
Province	Alberta
Postal Code	T1X2Z7

**Amenities**

Amenities	Playground, Schools, Shopping
Features	Back lane, French door
Parking Spaces	2
Parking	Detached Garage
# of Garages	2

**Interior**

Appliances	Refrigerator, Range - Electric, Dishwasher, Microwave, Stove, Sink, Combo
Heating	Forced air
Cooling	None
# of Stories	2

**Exterior**



Exterior Features	Landscaped
Foundation	Poured Concrete

## Listing Details

Listing Office	eXp Realty
----------------	------------



The trademarks MLS®, Multiple Listing Service® and the associated logos are owned by The Canadian Real Estate Association (CREA) and identify the quality of services provided by real estate professionals who are members of CREA. REALTOR®. Member of CREA and more.

Listing information last updated on October 13th, 2025 at 7:01am CDT