

\$600,000 - 236 Chelsea Manor, Chestermere

MLS® #A2255785

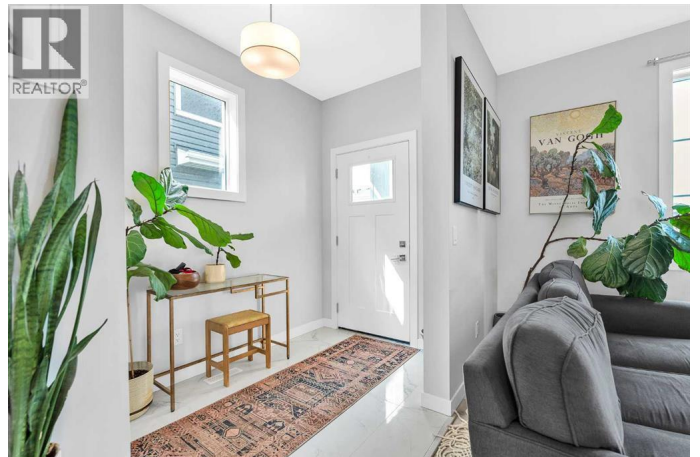
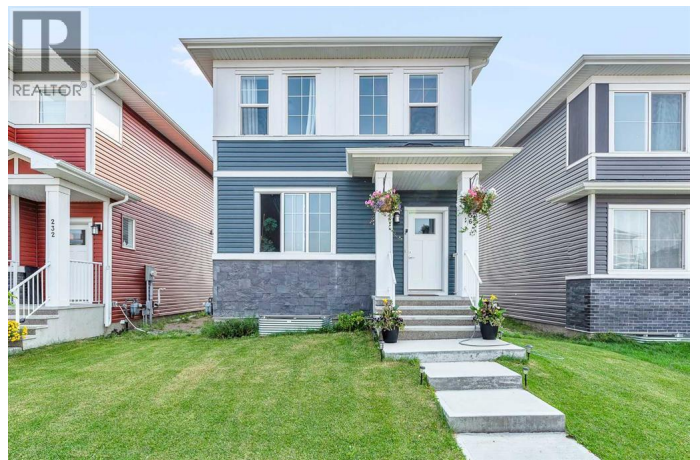
\$600,000

3 Bedroom, 3.00 Bathroom, 1,658 sqft

Single Family on 0.08 Acres

Chelsea, Chestermere, Alberta

Welcome to your dream home in the heart of Chelsea, Chestermere! This beautifully designed 2-storey detached home with a double detached garage offers everything you need—and more—in one of Chestermere's most vibrant and fast-growing communities, just 10 minutes from Calgary. Step inside to a bright and welcoming main floor, where the open-concept living and dining areas create the perfect space for both everyday living and entertaining. At the back of the home, the modern kitchen is a true showstopper, featuring luxury vinyl plank flooring, stainless steel appliances, full-height cabinetry, a large island, and a spacious walk-in pantry. Love to cook? This home comes complete with a fully equipped spice kitchen, ideal for preparing flavourful meals while keeping your main kitchen fresh and tidy. Upstairs, you'll find a generous primary retreat with a 4-piece ensuite and a walk-in closet, along with two additional well-sized bedrooms, a full bathroom, and a conveniently located laundry room. Looking for rental potential or multigenerational living? The home includes a separate side entrance to the unfinished basement, giving you the flexibility to develop it to suit your needs—whether it's a legal suite, in-law space, or extended living area. Located in the thoughtfully planned community of Chelsea, this home gives you access to over 320 acres of family-friendly amenities, including scenic walking paths,



parks, storm ponds, and future local shopping. With quick access to Stoney Trail and East Hills Shopping Centreâ€”featuring Costco, Walmart, Cineplex, banks, and restaurantsâ€”youâ€™re perfectly positioned for both convenience and lifestyle. Chelsea is where small-town charm meets urban convenience. Whether you're upsizing, investing, or looking for the perfect place to raise a family, this home offers it allâ€”style, space, and opportunity. (id:6289)

Built in 2022

Essential Information

Listing #	A2255785
Price	\$600,000
Bedrooms	3
Bathrooms	3.00
Half Baths	1
Square Footage	1,658
Acres	0.08
Year Built	2022
Type	Single Family
Sub-Type	Freehold

Community Information

Address	236 Chelsea Manor
Subdivision	Chelsea
City	Chestermere
Province	Alberta
Postal Code	T1X2P5

Amenities

Amenities	Park, Playground, Schools, Shopping, Water Nearby
Features	See remarks, Back lane, Level
Parking Spaces	2
Parking	Detached Garage
# of Garages	2

Interior

Appliances	Refrigerator, Gas stove(s), Dishwasher, Stove, Microwave Range Hood Combo, Hood Fan, Garage door opener, Washer & Dryer
Heating	Central heating
Cooling	None
# of Stories	2
Basement	Separate entrance

Exterior

Exterior	Vinyl siding
Construction	Wood frame
Foundation	Poured Concrete

Listing Details

Listing Office Unison Realty Group Ltd.



The trademarks MLS®, Multiple Listing Service® and the associated logos are owned by The Canadian Real Estate Association (CREA) and identify the quality of services provided by real estate professionals who are members of CREA. REALTOR®. Member of CREA and more.

Listing information last updated on October 13th, 2025 at 11:46am CDT