

\$499,999 - 38 Eastpointe Drive, Blackfalds

MLS® #A2256971

\$499,999

5 Bedroom, 3.00 Bathroom, 1,284 sqft

Single Family on 0.14 Acres

Panorama Estates, Blackfalds, Alberta

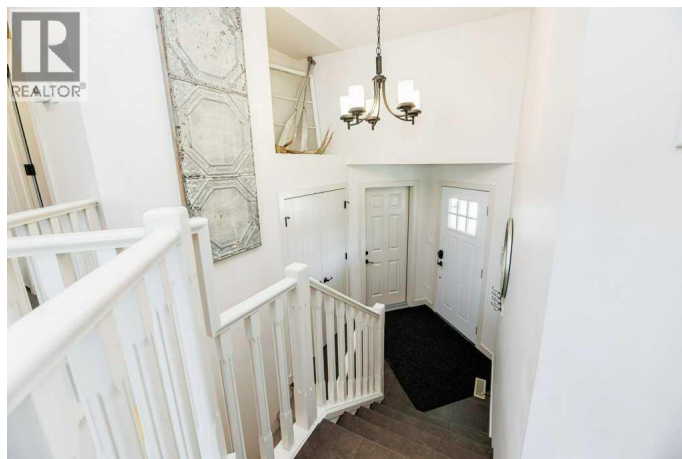
Welcome to this stunning and functional bi-level home located at 38 Eastpointe Drive in the heart of Blackfalds, Alberta – the fastest-growing, family-friendly community in the province! Known for its welcoming neighborhoods, top-rated schools, abundant parks, and convenient access to Red Deer and major highways, Blackfalds offers an ideal blend of small-town charm and modern amenities, perfect for families of all sizes. This meticulously maintained 5-bedroom, 3-bathroom home features a spacious double attached garage and a beautifully landscaped, fully fenced yard – an oasis for summer barbecues, children's playtime, or relaxing evenings under the stars. The bi-level design maximizes space and natural light, creating a warm and inviting atmosphere throughout. Step outside to enjoy a fully fenced backyard designed for safety and enjoyment. The low-maintenance landscaping, complete with mature trees and a sunny deck, provides the perfect setting for outdoor entertaining, gardening, or simply unwinding. This home is the perfect combination of style, functionality, and prime location in Blackfalds's™ thriving community. (id:6289)

Built in 2011

Essential Information

Listing # A2256971

Price \$499,999



Bedrooms	5
Bathrooms	3.00
Square Footage	1,284
Acres	0.14
Year Built	2011
Type	Single Family
Sub-Type	Freehold
Style	Bi-level

Community Information

Address	38 Eastpointe Drive
Subdivision	Panorama Estates
City	Blackfalds
Province	Alberta
Postal Code	T4M0G6

Amenities

Amenities	Park, Playground, Recreation Nearby, Schools, Shopping
Features	Back lane, PVC window, Closet Organizers
Parking Spaces	4
Parking	Attached Garage
# of Garages	2

Interior

Appliances	Refrigerator, Dishwasher, Stove, Microwave Range Hood Combo, Window Coverings, Washer & Dryer
Heating	Natural gas Forced air, In Floor Heating
Cooling	Central air conditioning
Has Basement	Yes

Exterior

Exterior	Brick, Vinyl siding
Exterior Features	Landscaped, Lawn
Construction	Wood frame
Foundation	Poured Concrete

Listing Details

Listing Office	Royal LePage Network Realty Corp.
----------------	-----------------------------------



The trademarks MLS®, Multiple Listing Service® and the associated logos are owned by The Canadian Real Estate Association (CREA) and identify the quality of services provided by real estate professionals who are members of CREA. REALTOR®. Member of CREA and more.

Listing information last updated on October 13th, 2025 at 7:16am CDT