

\$309,900 - 1318, 6 Merganser Drive W, Chestermere

MLS® #A2258319

\$309,900

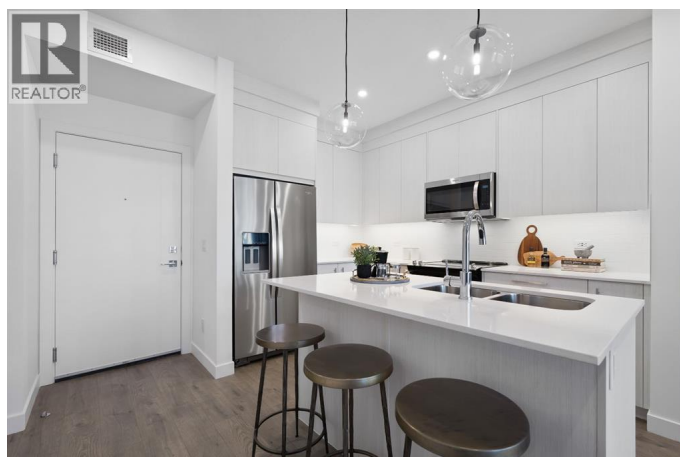
1 Bedroom, 1.00 Bathroom, 628 sqft

Single Family

Chelsea, Chestermere, Alberta

Experience stylish, low-maintenance living in this thoughtfully designed 1-Bedroom, 1-Bathroom, plus Den in Lockwood. Built by TRUMAN, this home pairs modern design with everyday convenience, creating the perfect space for first-time buyers, downsizers, or investors. Inside, you'll find a bright open-concept layout with a contemporary kitchen featuring full-height cabinetry, soft-close doors and drawers, sleek quartz countertops, and a stainless steel appliance package. The spacious living area is ideal for relaxing or entertaining, while the private balcony provides the perfect spot to enjoy fresh air. The Bedroom includes a generous closet and its own ensuite, while the Den offers flexibility for guests, a home office, or roommates. In-suite laundry adds to the practicality of the space. Located just minutes from parks, pathways, and Chestermere Lake, outdoor recreation is always within easy reach. Everyday essentials are close by at Chestermere Station and Chestermere Crossing, making shopping and dining effortless. Complete with a titled parking stall, this move-in-ready home offers an incredible opportunity to own in a growing community. Whether you're looking for a comfortable place to call home or a smart investment, Lockwood delivers the lifestyle you've been searching for. *Photos are of a similar unit. (id:6289)

Built in 2024



Essential Information

Listing #	A2258319
Price	\$309,900
Bedrooms	1
Bathrooms	1.00
Square Footage	628
Year Built	2024
Type	Single Family
Sub-Type	Condominium/Strata

Community Information

Address	1318, 6 Merganser Drive W
Subdivision	Chelsea
City	Chestermere
Province	Alberta
Postal Code	T1X2Y2

Amenities

Amenities	Playground, Shopping, Exercise Centre
Features	See remarks, Parking
Parking Spaces	1

Interior

Appliances	Refrigerator, Dishwasher, Range, Microwave Range Hood Combo, Window Coverings, Washer & Dryer
Heating	Baseboard heaters
Cooling	None
# of Stories	4

Exterior

Exterior	Composite Siding
Foundation	Poured Concrete

Listing Details

Listing Office	RE/MAX First
----------------	--------------



Association (CREA) and identify the quality of services provided by real estate professionals who are members of CREA. REALTOR®. Member of CREA and more.

Listing information last updated on October 13th, 2025 at 7:16am CDT