

\$579,900 - 27 Belgian Court, Cochrane

MLS® #A2260251

\$579,900

3 Bedroom, 3.00 Bathroom, 1,732 sqft
Single Family on 0.08 Acres

Heartland, Cochrane, Alberta

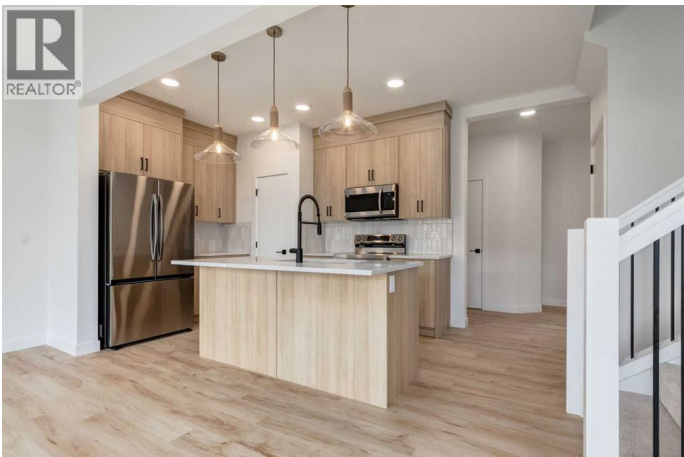
****\$20K off list price - special promo price -
Open House at Showhome - 15 Belgian Court,
Cochrane - October 11th 12-4pm, October
12th 12-2pm and October 13th 1-4pm ****

Welcome to the pinnacle of contemporary living in this beautifully designed detached home—the Dallas Model. Offering 1,726 sq ft of modern elegance, this 3-bedroom, 2.5-bath home blends style and functionality seamlessly. The open-concept main floor is flooded with natural light, enhanced by 9-foot ceilings and expansive triple-pane windows. A gourmet kitchen with sleek quartz countertops and a convenient walkthrough pantry adds to the home’s appeal. Enjoy the benefits of a separate side entrance and the ease of a double attached garage with direct access. Thoughtfully crafted, the Dallas Model is a truly exceptional place to call home. New Home Warranty Included (id:6289)

Built in 2025

Essential Information

Listing #	A2260251
Price	\$579,900
Bedrooms	3
Bathrooms	3.00
Half Baths	1
Square Footage	1,732
Acres	0.08
Year Built	2025



Type	Single Family
Sub-Type	Freehold

Community Information

Address	27 Belgian Court
Subdivision	Heartland
City	Cochrane
Province	Alberta
Postal Code	T4C3H5

Amenities

Amenities	Playground, Schools, Shopping
Features	No Animal Home, No Smoking Home
Parking Spaces	4
Parking	Attached Garage
# of Garages	2

Interior

Appliances	Washer, Refrigerator, Dishwasher, Stove, Dryer, Microwave, Oven - Built-In
Heating	Forced air
Cooling	None
# of Stories	2
Basement	Separate entrance

Exterior

Construction	Wood frame
Foundation	Poured Concrete

Listing Details

Listing Office	eXp Realty
----------------	------------



The trademarks MLS®, Multiple Listing Service® and the associated logos are owned by The Canadian Real Estate Association (CREA) and identify the quality of services provided by real estate professionals who are members of CREA. REALTOR®. Member of CREA and more.

Listing information last updated on October 13th, 2025 at 4:46am CDT