

\$399,900 - 202, 414 Squirrel Street, Banff

MLS® #A2260280

\$399,900

0 Bedroom, 1.00 Bathroom, 383 sqft

Single Family

N/A, Banff, Alberta

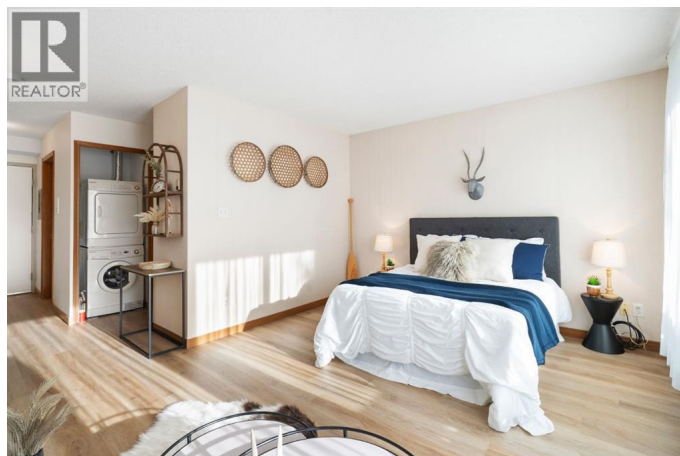
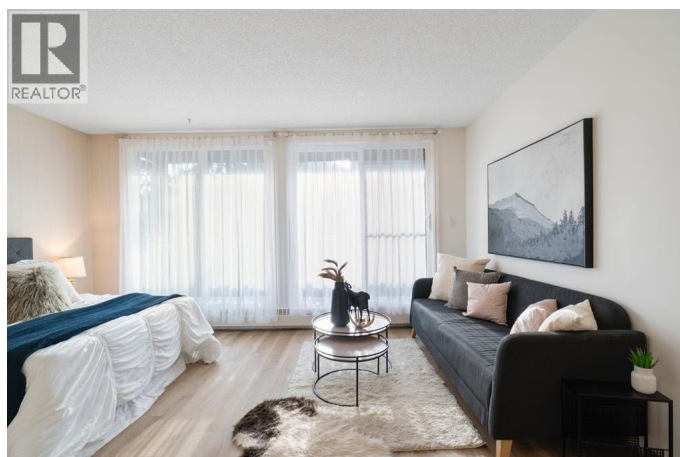
Discover affordable mountain living in this end-unit studio apartment, only a 10 minute walk from downtown Banff. Thoughtfully designed, this home features durable vinyl plank flooring and the comfort of a soundproofed common wall (~\$3000 upgrade). The kitchen includes a modern stainless steel fridge and the living space offers large windows that capture breathtaking views of Rundle and Tunnel Mountains. Practical amenities complete the package, including an assigned off-street parking stall, bicycle parking and a secure storage locker for all your mountain gear. Whether you're seeking a full-time home or an investment property for long term rentals, this studio offers both function and charm in one of Canada's most iconic settings. (id:6289)

Built in 1988

Essential Information

Listing #	A2260280
Price	\$399,900
Bathrooms	1.00
Square Footage	383
Year Built	1988
Type	Single Family
Sub-Type	Condominium/Strata
Style	Loft

Community Information



Address	202, 414 Squirrel Street
Subdivision	N/A
City	Banff
Province	Alberta
Postal Code	T1L1E6

Amenities

Amenities	Shopping
Features	No Smoking Home, Parking
Parking Spaces	1
Parking	Other

Interior

Appliances	Refrigerator, Stove, Hood Fan, Window Coverings, Washer/Dryer Stack-Up
Heating	Baseboard heaters
Cooling	None
Fireplace	Yes
# of Fireplaces	1
# of Stories	3

Exterior

Exterior	Concrete, Wood siding
Construction	Poured concrete, Wood frame

Listing Details

Listing Office	Century 21 Foothills Real Estate
----------------	----------------------------------



The trademarks MLS®, Multiple Listing Service® and the associated logos are owned by The Canadian Real Estate Association (CREA) and identify the quality of services provided by real estate professionals who are members of CREA. REALTOR®. Member of CREA and more.

Listing information last updated on October 13th, 2025 at 12:01am CDT