

\$465,000 - 1902, 280 Chelsea Road, Chestermere

MLS® #A2260466

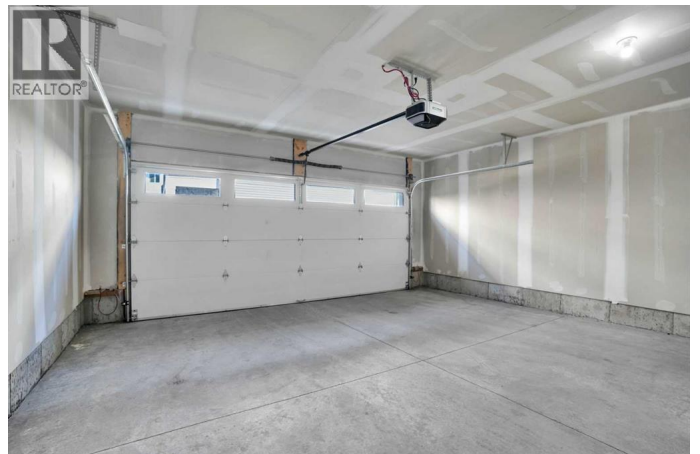
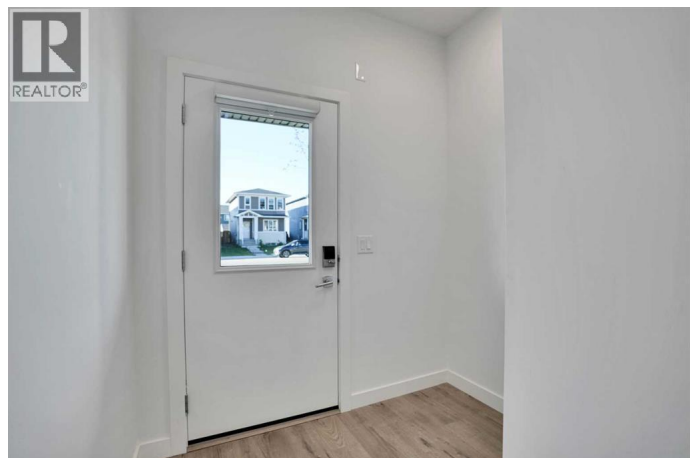
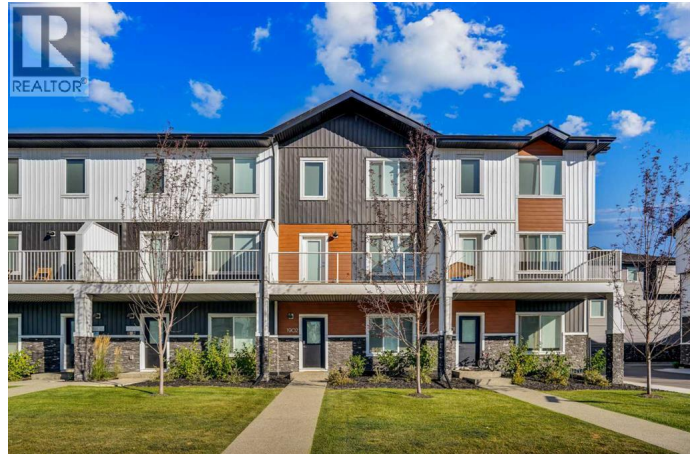
\$465,000

4 Bedroom, 3.00 Bathroom, 1,703 sqft

Single Family

Chelsea, Chestermere, Alberta

Back in Market due to financing. Aberdeen Townhomes by Truman! Experience the charm of this exquisite 4-Bedroom Townhome, nestled in the thriving and vibrant community of Chelsea. This exceptional home offers unparalleled convenience with nearby playgrounds, scenic pathways, and shopping options, all within a welcoming and dynamic neighborhood. Step inside to discover a beautifully designed living space featuring 4 bedrooms, 2.5 bathrooms, and an attached double heated garage. The main floor includes a versatile bedroom thatâ€™s ideal for guests or a home office. The interior showcases top-tier finishes and craftsmanship, including elegant Vinyl Plank flooring throughout the main living areas and high ceilings. The gourmet kitchen is a chefâ€™s delight, featuring Full-Height Cabinetry with soft-close Doors and Drawers, a sleek Stainless Steel Appliance package, and a storage pantry. The Eat-Up Bar, highlighted by stunning Quartz Countertops, offers a stylish spot for casual dining and entertaining. The Primary Bedroom serves as a serene retreat, complete with a spacious walk-in Closet and a luxurious 4-piece Ensuite bathroom. The upper level is thoughtfully designed with two additional Bedrooms, a 4-piece Main Bathroom, and convenient upper-floor Laundry, ensuring comfort and practicality for the entire family. Bright and airy, this move-in-ready home is an invitation to elevate your living experience and embrace the refined Truman lifestyle. Seize



the opportunity to make this exceptional townhome yours today! (id:6289)

Built in 2024

Essential Information

Listing #	A2260466
Price	\$465,000
Bedrooms	4
Bathrooms	3.00
Half Baths	1
Square Footage	1,703
Year Built	2024
Type	Single Family
Sub-Type	Condominium/Strata

Community Information

Address	1902, 280 Chelsea Road
Subdivision	Chelsea
City	Chestermere
Province	Alberta
Postal Code	T1X2X9

Amenities

Amenities	Park, Playground, Schools, Shopping, Water Nearby
Features	See remarks, Back lane, No Animal Home, No Smoking Home, Level, Gas BBQ Hookup, Parking
Parking Spaces	2
Parking	Attached Garage, Garage, Heated Garage
# of Garages	3

Interior

Appliances	Refrigerator, Range - Electric, Dishwasher, Microwave Range Hood Combo, Window Coverings, Garage door opener, Washer & Dryer
Heating	Natural gas Forced air
Cooling	None
# of Stories	3

Exterior

Exterior	Vinyl siding
Exterior Features	Landscaped
Construction	Wood frame
Foundation	Poured Concrete

Listing Details

Listing Office RE/MAX Real Estate (Mountain View)



The trademarks MLS®, Multiple Listing Service® and the associated logos are owned by The Canadian Real Estate Association (CREA) and identify the quality of services provided by real estate professionals who are members of CREA. REALTOR®. Member of CREA and more.

Listing information last updated on October 13th, 2025 at 4:46am CDT