

\$1,139,900 - 3 Waterford Manor, Chestermere

MLS® #A2262514

\$1,139,900

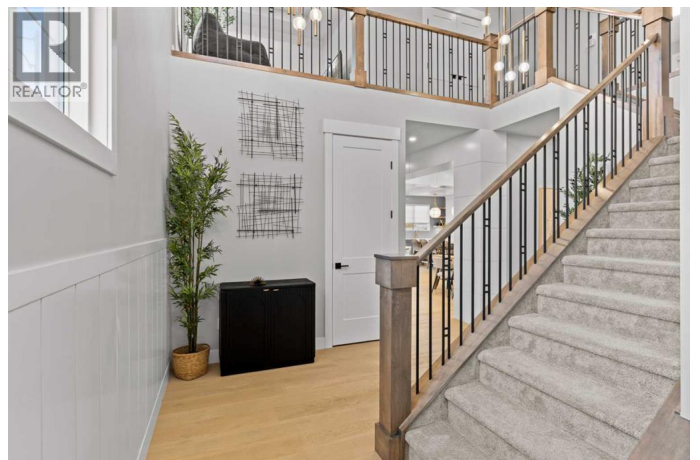
8 Bedroom, 5.00 Bathroom, 2,914 sqft

Single Family on 0.07 Acres

N/A, Chestermere, Alberta

Showhome Hours: Monday to Thursday 2 to 8pm, Weekends and Holidays 12-5pm, Closed Friday! ANOTHER JEWEL BY GREEN CEDAR HOMES! THIS SHOWHOME IS SOMETHING OUT OF A MOVIE! GORGEOUS EXTERIOR WITH AN ABSOLUTELY STUNNING INTERIOR!

THIS HOME IS JUST FULL OF UPGRADES LOCATED ON A CORNER LOT - MAIN FLOOR BEDROOM & FULL BATH - SPICE KITCHEN - FINISHED BASEMENT WITH WET BAR - MASTER WITH TRAY CEILINGS - FEATURE WALL, BUILT-INS AND MORE - Offering over 4000 SQFT of Luxurious Living Space with 7 (+1) Bedrooms, 5 FULL baths & Triple Garage Attached - Main floor offers BEDROOM/OFFICE & FULL BATH, dining, and spacious family room with fireplace. The kitchen is a culinary delight boasting Stunning Cabinetry, Stainless Steel Appliances, Kitchen Island and a SPICE KITCHEN! The usage of living space on the upper level is immaculate, offering 4 bedrooms and 3 FULL baths. Of the 4 bedrooms, 1 is the master that comes with a 5 PC ENSUITE, Spacious W.I.C & TRAY CEILINGS! 3 OUT OF 4 BEDROOMS ON THE UPPER LEVEL HAVE A W.I.C. You will also find a bonus room with TRAY CEILINGS and conveniently located laundry on the upper level. This home still has more to give! Make your way to the FULLY FINISHED BASEMENT that offers a REC ROOM WITH WET BAR, FULL BATH, 2 bedrooms and an



additional room that can be used as a gym or extra bedroom!! This home is in an amazing location with close proximity to the Rainbow Falls Plaza. In addition to that, it has easy access to Glenmore Trail and 17th Ave SE! SHOW HOMES DO NOT COME UP OFTEN, ESPECIALLY THOSE OF THIS CALIBUR - Call your favourite realtor for a showing today *** YOU DO NOT WANT TO MISS OUT! (id:6289)

Built in 2024

Essential Information

Listing #	A2262514
Price	\$1,139,900
Bedrooms	8
Bathrooms	5.00
Square Footage	2,914
Acres	0.07
Year Built	2024
Type	Single Family
Sub-Type	Freehold

Community Information

Address	3 Waterford Manor
Subdivision	N/A
City	Chestermere
Province	Alberta
Postal Code	T1X2T9

Amenities

Amenities	Golf Course, Park, Playground, Schools, Shopping, Water Nearby
Features	Wet bar, PVC window, No Animal Home, No Smoking Home
Parking Spaces	6
Parking	Attached Garage
# of Garages	3

Interior

Appliances	Washer, Refrigerator, Cooktop - Gas, Range - Electric, Dishwasher,
------------	--

	Dryer, Hood Fan
Heating	Natural gas Forced air
Cooling	None
Fireplace	Yes
# of Fireplaces	1
# of Stories	2
Has Basement	Yes

Exterior

Exterior	Composite Siding, Stone
Foundation	Poured Concrete

Listing Details

Listing Office Real Broker



The trademarks MLS®, Multiple Listing Service® and the associated logos are owned by The Canadian Real Estate Association (CREA) and identify the quality of services provided by real estate professionals who are members of CREA. REALTOR®. Member of CREA and more.

Listing information last updated on October 13th, 2025 at 3:31am CDT