

# \$439,900 - 67 Plumtree Crescent, Blackfalds

MLS® #A2262728

**\$439,900**

4 Bedroom, 3.00 Bathroom, 1,290 sqft

Single Family on 0.16 Acres

Panorama Estates, Blackfalds, Alberta

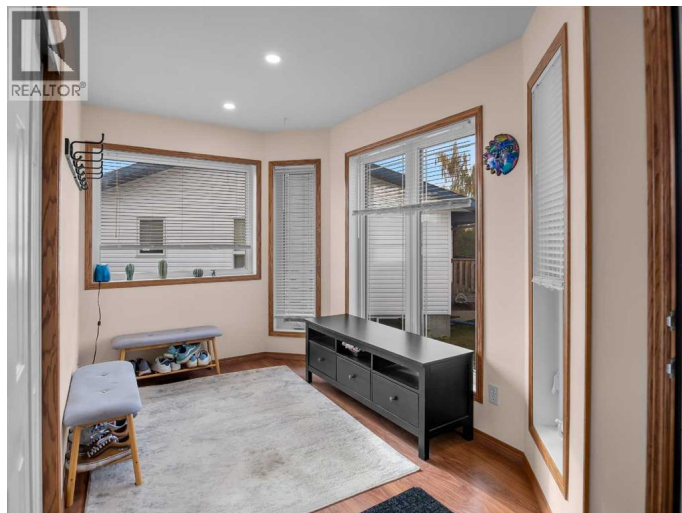
This fully finished raised bungalow has room for everyone—featuring 4 bedrooms, 3 full baths, and two garages (an attached single and a heated 26x28 detached!). The open-concept main floor feels bright and inviting with large windows, laminate flooring, and a cozy double-sided gas fireplace. The kitchen offers plenty of oak cabinets, quartz counters, and tons of storage with two pantries. A garden door off the dining area leads to the sunny south-facing deck—perfect for relaxing under the awning. The spacious primary suite fits a king bed and more, with French doors to the backyard, a walk-in closet, and a 5-piece ensuite with a jet tub and dual sinks. A main floor den with a bay window makes a great home office or flex space. Downstairs, enjoy a large family room, two generous bedrooms, a 4-piece bath with double vanity, and loads of storage. Outside, the pie-shaped, low-maintenance yard is beautifully landscaped with perennials, fruit trees, and plenty of room for RV parking. Located on a quiet crescent close to trails, parks, schools, and shopping—this home truly has it all! (id:6289)

Built in 2004

## Essential Information

Listing # A2262728

Price \$439,900



Bedrooms	4
Bathrooms	3.00
Square Footage	1,290
Acres	0.16
Year Built	2004
Type	Single Family
Sub-Type	Freehold
Style	Bungalow

### **Community Information**

Address	67 Plumtree Crescent
Subdivision	Panorama Estates
City	Blackfalds
Province	Alberta
Postal Code	T4M0E1

### **Amenities**

Amenities	Park, Playground, Schools, Shopping, Water Nearby
Features	Back lane
Parking Spaces	6
Parking	Attached Garage, Concrete, Detached Garage, Garage, Heated Garage, Oversize
# of Garages	4

### **Interior**

Appliances	Refrigerator, Dishwasher, Stove, Microwave Range Hood Combo, Washer/Dryer Stack-Up
Heating	Natural gas Other, Forced air
Cooling	Central air conditioning
Fireplace	Yes
# of Fireplaces	1
# of Stories	1
Has Basement	Yes

### **Exterior**

Exterior	Concrete, Stone, Vinyl siding
Exterior Features	Fruit trees, Garden Area, Landscaped
Construction	Poured concrete, Wood frame
Foundation	Poured Concrete

## Listing Details

Listing Office

Big Earth Realty



The trademarks MLS®, Multiple Listing Service® and the associated logos are owned by The Canadian Real Estate Association (CREA) and identify the quality of services provided by real estate professionals who are members of CREA. REALTOR®. Member of CREA and more.

Listing information last updated on October 13th, 2025 at 7:16am CDT